



HOPKINS
HOMES



The Brook

Computer generated image indicative only* External finishes, windows and appearance will vary.

The Brook

3 bedroom house
Plots 1, 5, 33, 48(h), 49, 56(h) & 59



Ground Floor



First Floor

Kitchen/Dining Area	5.385m x 2.805m	17'8" x 9'2"
Living Room	4.697m x 3.320m	15'5" x 10'10"
Master Bedroom	3.627m x 3.141m	10'4" x 10'3"
Bedroom 2	3.141m x 2.904m	10'3" x 9'6"
Bedroom 3	2.721m x 2.149m	8'11" x 7'0"

(h) plot is handed

This floorplan is indicative of this house type only and does not reflect plot specific variations. Any and all such variations, for example additional windows, are shown on plot specific drawings for this development. Please speak to our sales consultant for details.

Indicates where measurements have been taken from. *Computer generated images are a generic indication of a finished house type but are not specific to this development. External finishes, materials and appearance will vary, please refer to plot specific drawing and information in sales office. Updated August 2021

MILLER'S GATE by HOPKINS HOMES

**CONSUMER
CODE FOR
HOME BUILDERS**

www.consumercode.co.uk



HOPKINS
HOMES

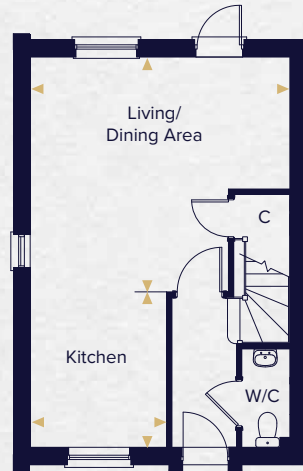


The Brett

Computer generated image indicative only*. External finishes and appearance will vary.

The Brett

3 bedroom house
Plots 2, 3, 4, 60, 61, 64(h), 65 & 66(h)



Ground Floor



First Floor

Kitchen	2.937m x 2.570m	9'7" x 8'5"
Living/Dining Area	4.900m x 4.437m	16'1" x 14'6"
Master Bedroom	3.622m x 2.722m	11'10" x 8'11"
Bedroom 2	2.957m x 2.718m	9'8" x 8'11"
Bedroom 3	2.494m x 2.084m	8'2" x 6'10"

(h) plot is handed

This floorplan is indicative of this house type only and does not reflect plot specific variations. Any and all such variations, for example additional windows, are shown on plot specific drawings for this development. Please speak to our sales consultant for details.

Indicates where measurements have been taken from. *Computer generated images are a generic indication of a finished house type but are not specific to this development. External finishes, materials and appearance will vary, please refer to plot specific drawing and information in sales office. Updated August 2021

MILLER'S GATE by HOPKINS HOMES

**CONSUMER
CODE FOR
HOME BUILDERS**

www.consumercode.co.uk



HOPKINS
HOMES

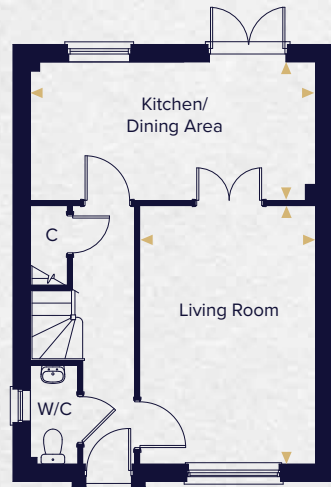


The Eaton

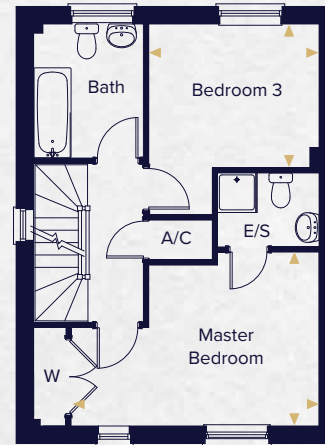
Computer generated image indicative only*. External finishes and appearance will vary.

The Eaton

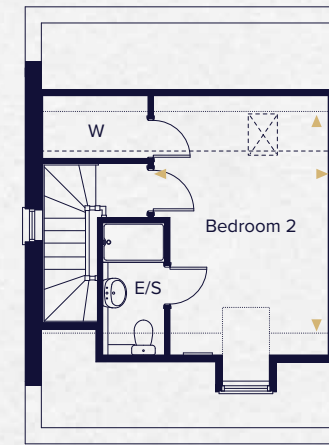
3 bedroom townhouse
Plots 6, 7(h), 8 & 9(h)



Ground Floor



First Floor



Second Floor

Kitchen/Dining Area	5.395m x 2.620m	17'8" x 8'7"
Living Room	4.883m x 3.331m	16'0" x 10'11"
Master Bedroom	4.688m x 3.387m	15'4" x 11'1"
Bedroom 2	4.168m x 3.305m	13'8" x 10'6"
Bedroom 3	3.228m x 2.720m	10'7" x 8'11"

--- Indicates a reduced head height
 Indicates a reduced head height below 1.5m
 ☒ Velux Window
 (h) plot is handed

This floorplan is indicative of this house type only and does not reflect plot specific variations. Any and all such variations, for example additional windows, are shown on plot specific drawings for this development. Please speak to our sales consultant for details.

Indicates where measurements have been taken from. *Computer generated images are a generic indication of a finished house type but are not specific to this development. External finishes, materials and appearance will vary, please refer to plot specific drawing and information in sales office. Updated August 2021

MILLER'S GATE by HOPKINS HOMES

**CONSUMER
CODE FOR
HOME BUILDERS**

www.consumercode.co.uk



HOPKINS
HOMES



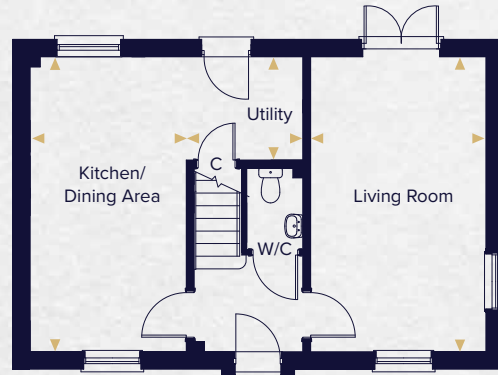
The Blyth

Computer generated image indicative only*. External finishes and appearance will vary.

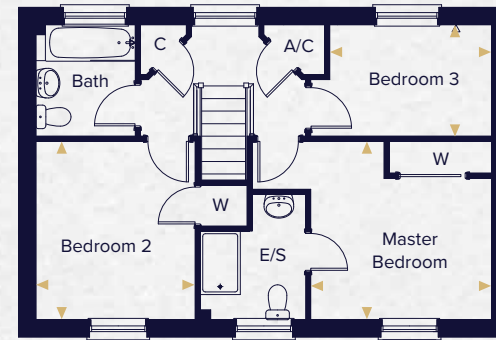
The Blyth

3 bedroom house

Plots 10, 11(h), 12, 32(h), 34, 42, 52(h), 53, 67, 76 & 77(h)



Ground Floor



First Floor

Kitchen/Dining Area	5.572m x 2.975m	18'3" x 9'9"
Utility	2.200m x 1.950m	7'2" x 6'4"
Living Room	5.572m x 3.310m	18'3" x 10'10"
Master Bedroom	3.420m x 3.375m	11'2" x 11'0"
Bedroom 2	3.375m x 3.005m	11'0" x 9'10"
Bedroom 3	3.016m x 2.102m	9'6" x 6'10"

(h) plot is handed

This floorplan is indicative of this house type only and does not reflect plot specific variations. Any and all such variations, for example additional windows, are shown on plot specific drawings for this development. Please speak to our sales consultant for details.

Indicates where measurements have been taken from. *Computer generated images are a generic indication of a finished house type but are not specific to this development. External finishes, materials and appearance will vary, please refer to plot specific drawing and information in sales office. Updated August 2021

MILLER'S GATE by HOPKINS HOMES

**CONSUMER
CODE FOR
HOME BUILDERS**

www.consumercode.co.uk



HOPKINS
HOMES

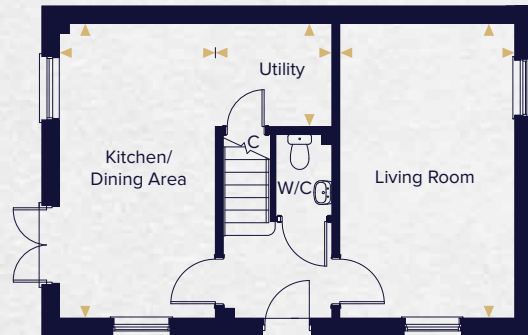


The Barnack

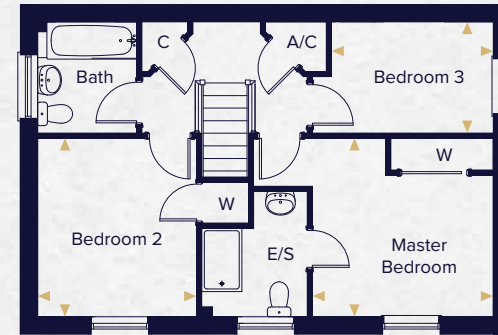
Computer generated image indicative only*. External finishes and appearance will vary.

The Barnack

3 bedroom house
Plots 41 & 43, & 75(h)



Ground Floor



First Floor

Kitchen/Dining Area	5.572m x 2.950m	18'3" x 9'8"
Utility	2.175m x 1.950m	7'2" x 6'4"
Living Room	5.572m x 3.310m	18'3" x 10'10"
Master Bedroom	3.420m x 3.375m	11'2" x 11'0"
Bedroom 2	3.375m x 3.005m	11'0" x 9'10"
Bedroom 3	3.060m x 2.102m	9'6" x 6'10"

(h) plot is handed

This floorplan is indicative of this house type only and does not reflect plot specific variations. Any and all such variations, for example additional windows, are shown on plot specific drawings for this development. Please speak to our sales consultant for details.

Indicates where measurements have been taken from. *Computer generated images are a generic indication of a finished house type but are not specific to this development. External finishes, materials and appearance will vary, please refer to plot specific drawing and information in sales office. Updated August 2021

MILLER'S GATE by HOPKINS HOMES

**CONSUMER
CODE FOR
HOME BUILDERS**

www.consumercode.co.uk



HOPKINS
HOMES

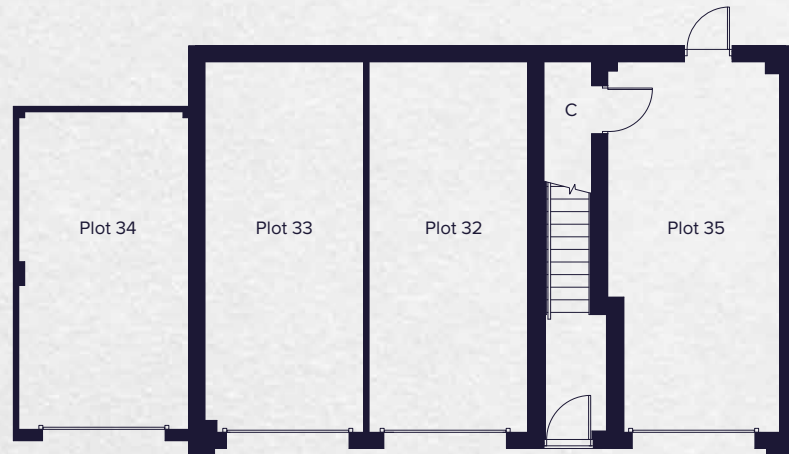


The Alde

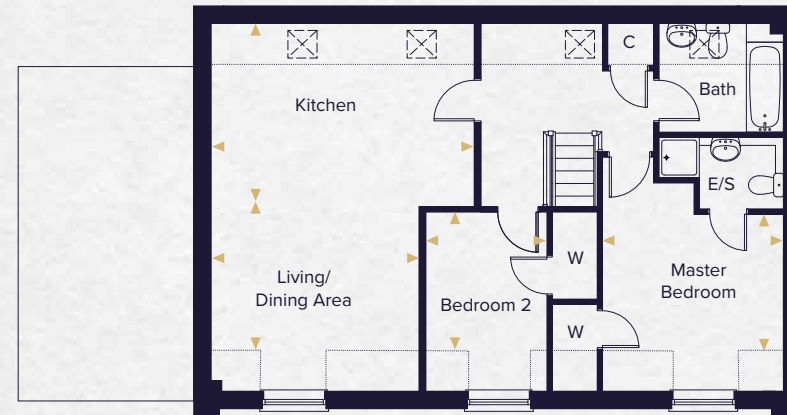
Computer generated image indicative only*. External finishes and appearance will vary.

The Alde

2 bedroom coach house
Plot 35



Ground Floor



First Floor

Kitchen	3.926m x 2.400m	12'11" x 7'10"
Living//Dining Area	4.969m x 3.780m	16'4" x 12'5"
Master Bedroom	3.417m x 2.575m	11'3" x 8'5"
Bedroom 2	2.615m x 2.287m	8'7" x 7'6"

.... Indicates reduced head height below 1.5m
 ☒ Velux Window

This floorplan is indicative of this house type only and does not reflect plot specific variations. Any and all such variations, for example additional windows, are shown on plot specific drawings for this development. Please speak to our sales consultant for details.

Indicates where measurements have been taken from. *Computer generated images are a generic indication of a finished house type but are not specific to this development. External finishes, materials and appearance will vary, please refer to plot specific drawing and information in sales office.

MILLER'S GATE by HOPKINS HOMES



HOPKINS
HOMES



The Keswick

Computer generated image indicative only*. External finishes and appearance will vary.

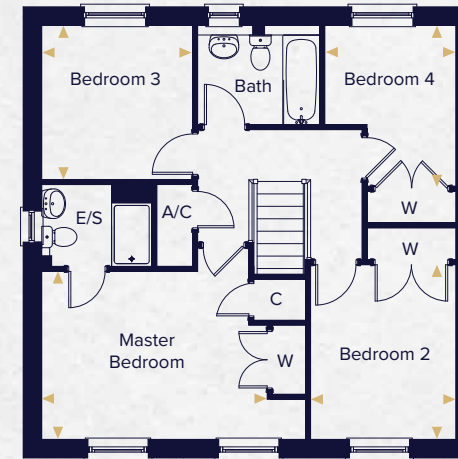
The Keswick

4 bedroom house

Plots 36 & 37(h)



Ground Floor



First Floor

Kitchen/Breakfast Area	3.915m x 3.800m	12'10" x 12'6"
Utility	2.653m x 1.663m	8'8" x 5'5"
Living Room	4.698m x 3.872m	15'5" x 12'8"
Dining Room	3.029m x 2.700m	9'11" x 8'0"
Master Bedroom	4.260m x 3.174m	13'12" x 10'5"
Bedroom 2	3.300m x 2.743m	10'10" x 8'12"
Bedroom 3	2.912m x 2.851m	9'7" x 9'4"
Bedroom 4	3.037m x 2.473m	9'12" x 8'2"

(h) plot is handed

This floorplan is indicative of this house type only and does not reflect plot specific variations. Any and all such variations, for example additional windows, are shown on plot specific drawings for this development. Please speak to our sales consultant for details.

Indicates where measurements have been taken from. *Computer generated images are a generic indication of a finished house type but are not specific to this development. External finishes, materials and appearance will vary, please refer to plot specific drawing and information in sales office. Updated August 2021

MILLER'S GATE by HOPKINS HOMES

**CONSUMER
CODE FOR
HOME BUILDERS**

www.consumercode.co.uk



HOPKINS
HOMES



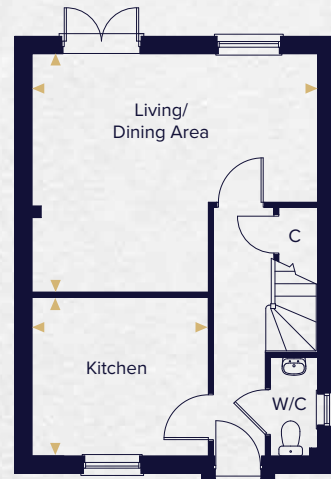
The Mattishall

Computer generated image indicative only*. External finishes and appearance will vary.

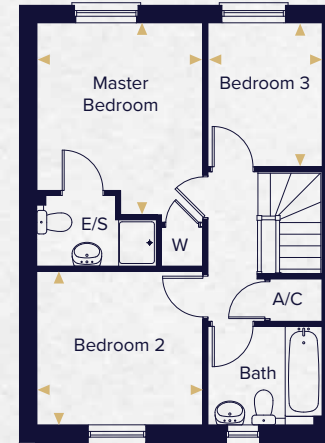
The Mattishall

3 bedroom house

Plot 38



Ground Floor



First Floor

Kitchen	3.329m x 3.000m	10'11" x 9'10"
Living/Dining Area	5.395m x 4.502m	17'8" x 14'9"
Master Bedroom	3.627m x 3.136m	11'11" x 10'11"
Bedroom 2	3.136m x 2.904m	10'3" x 9'6"
Bedroom 3	2.720m x 2.159m	8'11" x 7'1"

This floorplan is indicative of this house type only and does not reflect plot specific variations. Any and all such variations, for example additional windows, are shown on plot specific drawings for this development. Please speak to our sales consultant for details.

Indicates where measurements have been taken from. *Computer generated images are a generic indication of a finished house type but are not specific to this development. External finishes, materials and appearance will vary, please refer to plot specific drawing and information in sales office.

MILLER'S GATE by HOPKINS HOMES

**CONSUMER
CODE FOR
HOME BUILDERS**

www.consumercode.co.uk



HOPKINS
HOMES

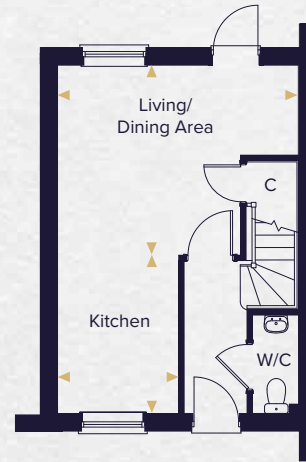


The Burgh

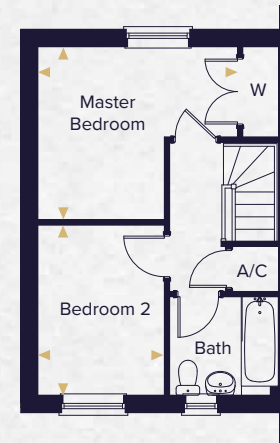
Computer generated image indicative only*. External finishes and appearance will vary.

The Burgh

2 bedroom house
Plots 39, 40(h), 62(h) & 63(h)



Ground Floor



First Floor

Living/Dining Area	4.553m x 3.594m	14'11" x 11'9"
Kitchen	2.990m x 2.285m	9'10" x 7'6"
Master Bedroom	3.775m x 3.271m	12'5" x 10'9"
Bedroom 2	2.393m x 3.213m	7'10" x 10'6"

(h) plot is handed

This floorplan is indicative of this house type only and does not reflect plot specific variations. Any and all such variations, for example additional windows, are shown on plot specific drawings for this development. Please speak to our sales consultant for details.

Indicates where measurements have been taken from. *Computer generated images are a generic indication of a finished house type but are not specific to this development. External finishes, materials and appearance will vary, please refer to plot specific drawing and information in sales office. Updated August 2021



HOPKINS
HOMES

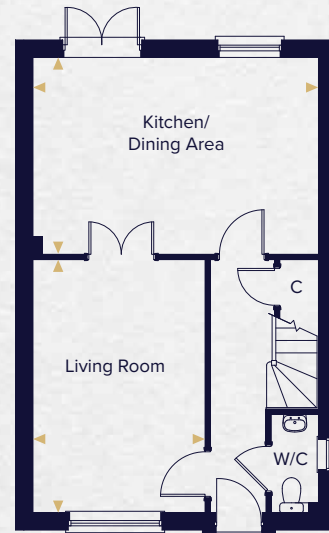


The Liston

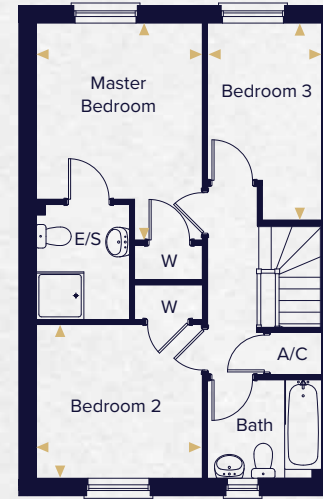
Computer generated image indicative only*. External finishes and appearance will vary.

The Liston

3 bedroom house
Plots 44, 45(h), 57 & 58(h)



Ground Floor



First Floor

Kitchen/Dining Area	5.395m 3.722m	17'8" x 12'3"
Living Room	4.783m x 3.255m	15'8" x 10'8"
Master Bedroom	4.630m x 3.140m	15'2" x 10'4"
Bedroom 2	3.140m x 2.905m	10'4" x 9'6"
Bedroom 3	3.724m x 2.160m	12'3" x 7'1"

(h) plot is handed

This floorplan is indicative of this house type only and does not reflect plot specific variations. Any and all such variations, for example additional windows, are shown on plot specific drawings for this development. Please speak to our sales consultant for details.

Indicates where measurements have been taken from. *Computer generated images are a generic indication of a finished house type but are not specific to this development. External finishes, materials and appearance will vary, please refer to plot specific drawing and information in sales office. Updated August 2021

MILLER'S GATE by HOPKINS HOMES

**CONSUMER
CODE FOR
HOME BUILDERS**

www.consumercode.co.uk



HOPKINS
HOMES

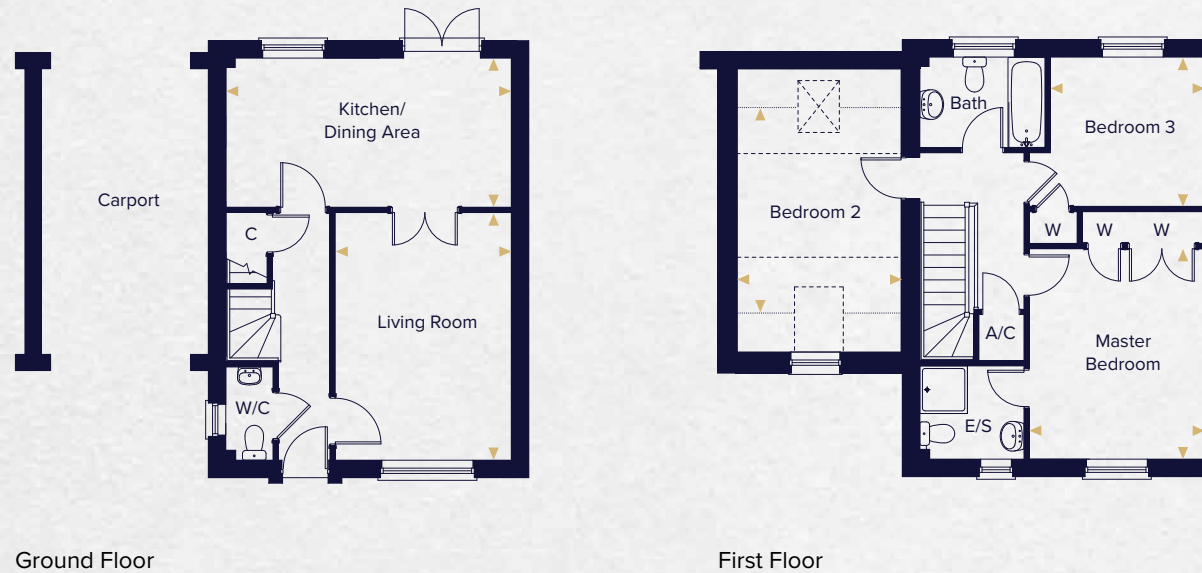


The Sutton

Computer generated image indicative only*. External finishes and appearance will vary.

The Sutton

3 bedroom house
Plots 46, 47(h), 50, 51(h), 54 & 55(h)



Kitchen/Dining Area	5.395m x 2.820m	17'8" x 9'3"
Living Room	4.679m x 3.330m	15'4" x 10'11"
Master Bedroom	3.979m x 3.330m	13'0" x 10'11"
Bedroom 2	3.860m x 3.101m	12'8" x 10'2"
Bedroom 3	2.929m x 2.824m	9'7" x 9'3"

--- Indicates reduced head height
 Indicates reduced head height below 1.5m
 ☒ Velux Window
 (h) plot is handed

This floorplan is indicative of this house type only and does not reflect plot specific variations. Any and all such variations, for example additional windows, are shown on plot specific drawings for this development. Please speak to our sales consultant for details.

Indicates where measurements have been taken from. *Computer generated images are a generic indication of a finished house type but are not specific to this development. External finishes, materials and appearance will vary, please refer to plot specific drawing and information in sales office. Updated August 2021

MILLER'S GATE by HOPKINS HOMES

**CONSUMER
CODE FOR
HOME BUILDERS**

www.consumercode.co.uk



HOPKINS
HOMES

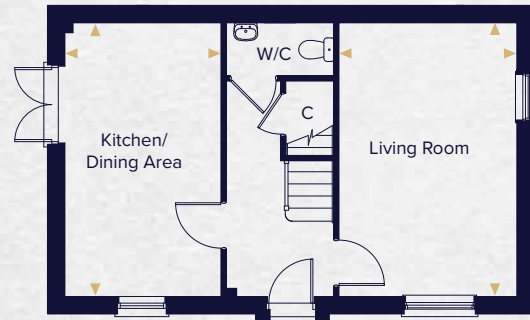


The March

Computer generated image indicative only*. External finishes and appearance will vary.

The March

2 bedroom house
Plot 68



Ground Floor



First Floor

Kitchen/Dining Area	5.171m x 2.948m	16'12" x 9'8"
Living Room	5.171m x 3.360m	16'12" x 11'0"
Master Bedroom	5.171m x 3.360m	16'12" x 11'0"
Bedroom 2	3.198m x 2.944m	10'6" x 9'8"

This floorplan is indicative of this house type only and does not reflect plot specific variations. Any and all such variations, for example additional windows, are shown on plot specific drawings for this development. Please speak to our sales consultant for details.

Indicates where measurements have been taken from. *Computer generated images are a generic indication of a finished house type but are not specific to this development. External finishes, materials and appearance will vary, please refer to plot specific drawing and information in sales office.

MILLER'S GATE by HOPKINS HOMES

**CONSUMER
CODE FOR
HOME BUILDERS**

www.consumercode.co.uk



HOPKINS
HOMES



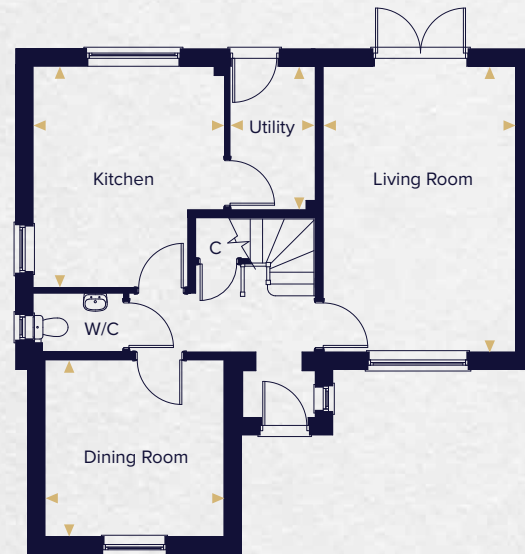
The Wensum

Computer generated image indicative only*. External finishes and appearance will vary.

The Wensum

4 bedroom house

Plot 80



Ground Floor



First Floor

Kitchen	4.188m x 3.620m	13'9" x 11'10"
Utility	2.710m x 1.598m	8'11" x 5'3"
Dining Room	3.380m x 3.338m	11'1" x 10'11"
Living Room	5.398m x 3.637m	17'8" x 11'11"
Master Bedroom	3.677m x 3.128m	12'1" x 10'3"
Bedroom 2	3.380m x 2.860m	11'1" x 9'5"
Bedroom 3	3.120m x 2.961m	10'3" x 9'9"
Bedroom 4	2.651m x 2.170m	8'8" x 7'1"

This floorplan is indicative of this house type only and does not reflect plot specific variations. Any and all such variations, for example additional windows, are shown on plot specific drawings for this development. Please speak to our sales consultant for details.

Indicates where measurements have been taken from. *Computer generated images are a generic indication of a finished house type but are not specific to this development. External finishes, materials and appearance will vary, please refer to plot specific drawing and information in sales office.

MILLER'S GATE by HOPKINS HOMES

**CONSUMER
CODE FOR
HOME BUILDERS**

www.consumercode.co.uk



HOPKINS
HOMES

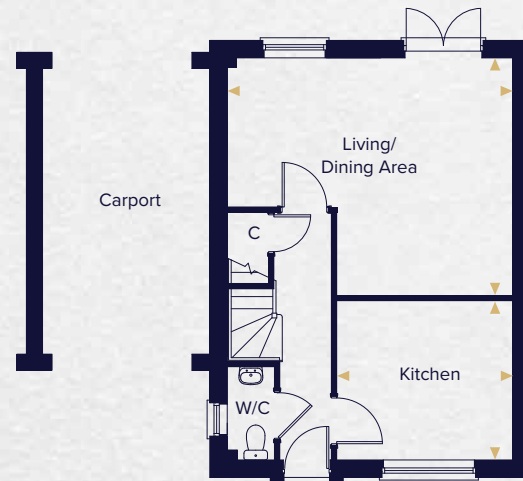


The Yaxley

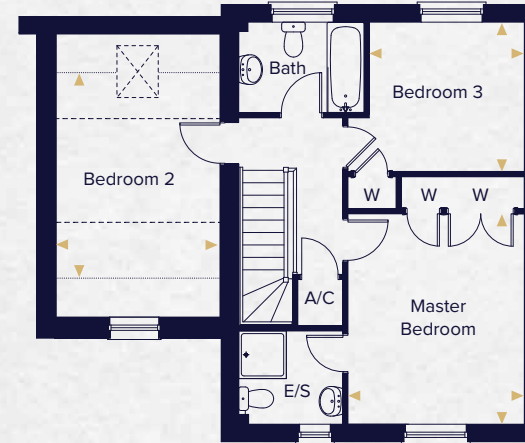
Computer generated image indicative only*. External finishes and appearance will vary.

The Yaxley

3 bedroom house
Plots 78(h) & 79



Ground Floor



First Floor

Kitchen	3.330m x 2.900m	10'11" x 6'6"
Living/Dining Area	5.395m x 4.601m	17'8" x 15'1"
Master Bedroom	3.979m x 3.330m	13'1" x 10'11"
Bedroom 2	4.860m x 3.105m	15'11" x 10'2"
Bedroom 3	2.929m x 2.824m	9'7" x 9'3"

--- Indicates reduced head height
 Indicates reduced head height below 1.5m
 ☒ Velux Window
 (h) plot is handed

This floorplan is indicative of this house type only and does not reflect plot specific variations. Any and all such variations, for example additional windows, are shown on plot specific drawings for this development. Please speak to our sales consultant for details.

Indicates where measurements have been taken from. *Computer generated images are a generic indication of a finished house type but are not specific to this development. External finishes, materials and appearance will vary, please refer to plot specific drawing and information in sales office.

MILLER'S GATE by HOPKINS HOMES

**CONSUMER
CODE FOR
HOME BUILDERS**

www.consumercode.co.uk