

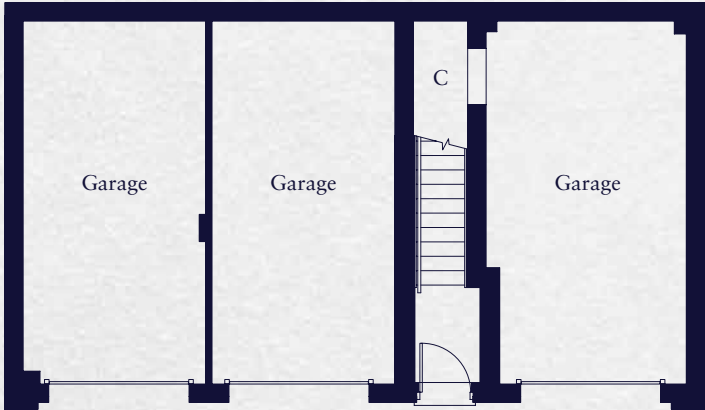


The Keswick

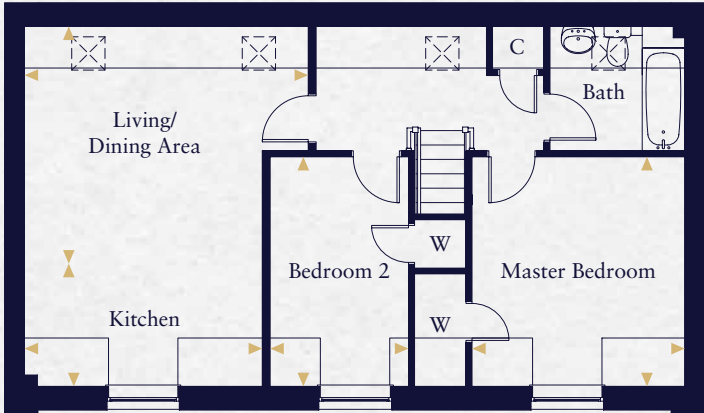
Computer generated image indicative only. External finishes and appearance will vary.

The Keswick

2 bedroom coach-house



Ground Floor



First Floor

Kitchen	3.931m x 2.025m	12'11" x 6'8"
Living/Dining Area	4.691m x 3.922m	15'5" x 12'9"
Master Bedroom	3.510m x 3.375m	11'6" x 11'1"
Bedroom 2	3.375m x 2.287m	11'1" x 7'6"

This floorplan is indicative of this house type only and does not reflect plot specific variations. Any and all such variations, for example additional windows, are shown on plot specific drawings for this development. Please speak to our sales consultant for details.

— Indicates reduced head height ☒ Velux window

◀ Indicates where measurements have been taken from. Computer generated images are a generic indication of a finished house type but are not specific to this development. External finishes, materials and appearance will vary, please refer to plot specific drawing and information in sales office.



HOPKINS
HOMES

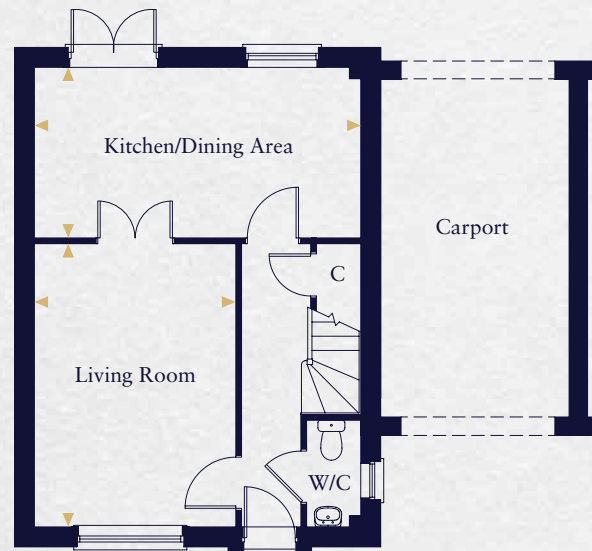


The Gresham

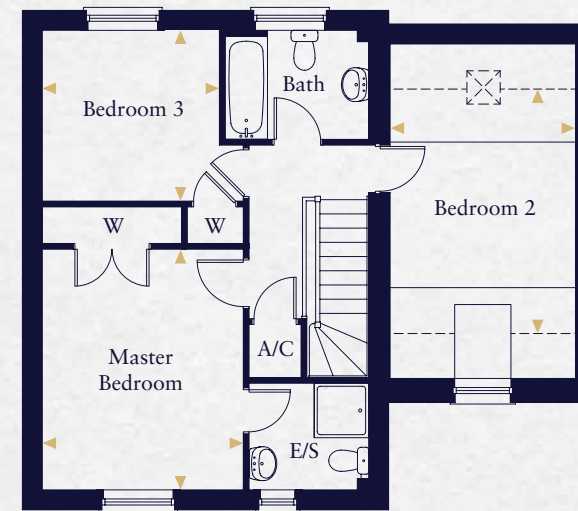
Computer generated image indicative only. External finishes and appearance will vary.

The Gresham

3 bedroom semi-detached home



Ground Floor



First Floor

Kitchen/Dining Area	5.395m x 2.820m	17'4" x 9'4"
Living Room	4.682m x 3.331m	15'7" x 10'11"
Master Bedroom	3.978m x 3.322m	13'0" x 10'11"
Bedroom 2	4.042m x 3.065m	13'3" x 10'0"
Bedroom 3	2.927m x 2.824m	9'7" x 9'3"

This floorplan is indicative of this house type only and does not reflect plot specific variations. Any and all such variations, for example additional windows, are shown on plot specific drawings for this development. Please speak to our sales consultant for details.

— Indicates reduced head height --- Indicates a reduced head height below 1.5m ☒ Velux Window

◀ Indicates where measurements have been taken from. Computer generated images are a generic indication of a finished house type but are not specific to this development. External finishes, materials and appearance will vary, please refer to plot specific drawing and information in sales office.

ST GEORGE'S PLACE *by* HOPKINS HOMES

**CONSUMER
CODE FOR
HOME BUILDERS**

www.consumercode.co.uk



HOPKINS
HOMES

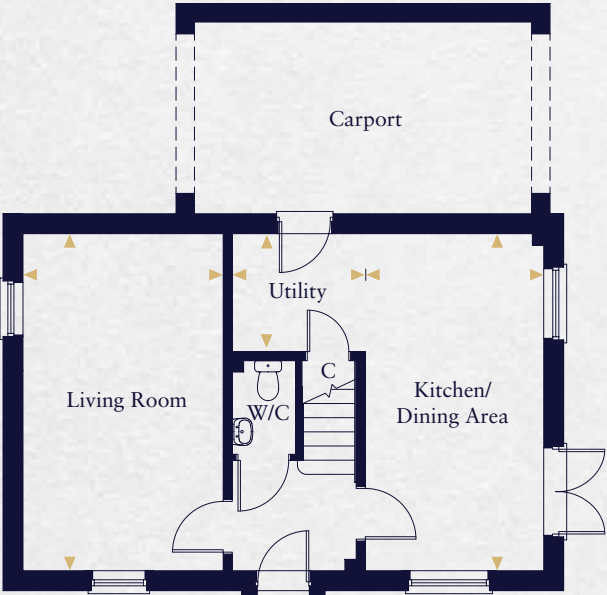


The Sheringham

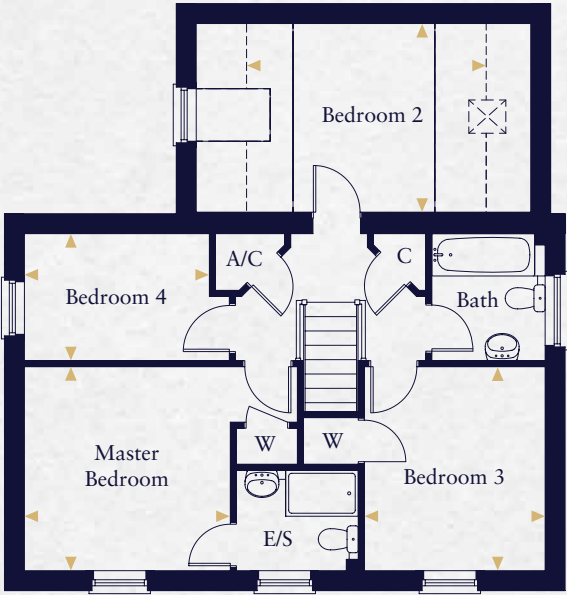
Computer generated image indicative only. External finishes and appearance will vary.

The Sheringham

4 bedroom detached home



Ground Floor



First Floor

Kitchen/Dining Area	5.572m x 2.950m	18'3" x 9'8"
Utility	2.202m x 1.950m	7'0" x 6'4"
Living Room	5.572m x 3.310m	18'3" x 10'10"
Master Bedroom	3.404m x 3.372m	11'2" x 11'0"
Bedroom 2	4.060m x 2.952m	13'3" x 9'8"
Bedroom 3	3.375m x 2.990m	11'0" x 9'10"
Bedroom 4	3.058m x 2.100m	10'0" x 6'10"

This floorplan is indicative of this house type only and does not reflect plot specific variations. Any and all such variations, for example additional windows, are shown on plot specific drawings for this development. Please speak to our sales consultant for details.

— Indicates reduced head height --- Indicates a reduced head height below 1.5m ☒ Velux Window

◀ Indicates where measurements have been taken from. Computer generated images are a generic indication of a finished house type but are not specific to this development. External finishes, materials and appearance will vary, please refer to plot specific drawing and information in sales office.

ST GEORGE'S PLACE *by* HOPKINS HOMES

**CONSUMER
CODE FOR
HOME BUILDERS**

www.consumercode.co.uk



HOPKINS
HOMES



The Kelling

Computer generated image indicative only. External finishes and appearance will vary.

The Kelling

4 bedroom detached home



Ground Floor



First Floor

Kitchen/Breakfast Area	3.915m x 3.800m	12'10" x 12'5"
Utility	2.653m x 1.663m	8'8" x 5'5"
Living Room	4.698m x 3.873m	15'5" x 12'8"
Dining Room	3.029m x 2.700m	9'11" x 8'10"
Master Bedroom	4.260m x 3.174m	13'11" x 10'5"
Bedroom 2	2.912m x 2.850m	9'9" x 9'4"
Bedroom 3	3.299m x 2.742m	10'9" x 9'0"
Bedroom 4	3.037m x 2.473m	9'11" x 8'1"

This floorplan is indicative of this house type only and does not reflect plot specific variations. Any and all such variations, for example additional windows, are shown on plot specific drawings for this development. Please speak to our sales consultant for details.

◀ Indicates where measurements have been taken from. Computer generated images are a generic indication of a finished house type but are not specific to this development. External finishes, materials and appearance will vary, please refer to plot specific drawing and information in sales office.

ST GEORGE'S PLACE *by* HOPKINS HOMES



HOPKINS
HOMES

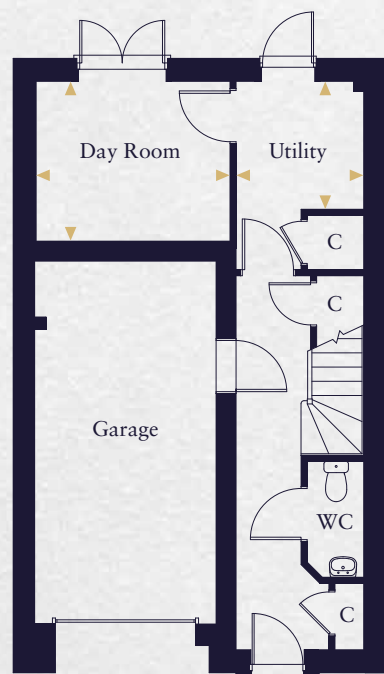


The Earsham

Computer generated image indicative only. External finishes and appearance will vary.

The Earsham

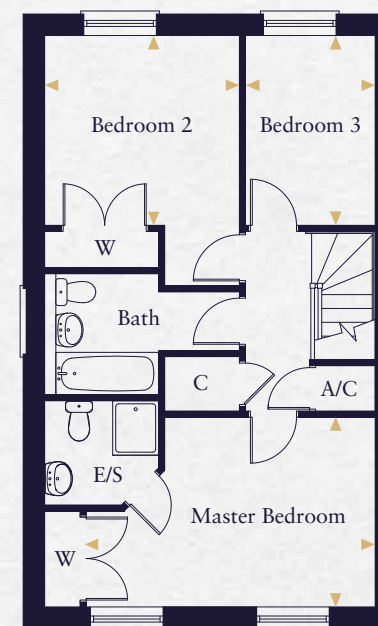
3 bedroom townhouse



Ground Floor



First Floor



Second Floor

Kitchen/Dining Area	5.385m x 4.260m	22'7" x 14'0"
Utility	2.080m x 2.050m	6'10" x 6'9"
Living Room	5.385m x 4.983m	22'7" x 16'4"
Day Room	3.205m x 2.038m	10'6" x 6'8"
Master Bedroom	4.725m x 3.087m	20'5" x 10'1"
Bedroom 2	3.125m x 3.087m	14'6" x 10'1"
Bedroom 3	3.087m x 2.160m	10'1" x 7'10"

This floorplan is indicative of this house type only and does not reflect plot specific variations. Any and all such variations, for example additional windows, are shown on plot specific drawings for this development. Please speak to our sales consultant for details.

◀ Indicates where measurements have been taken from. Computer generated images are a generic indication of a finished house type but are not specific to this development. External finishes, materials and appearance will vary, please refer to plot specific drawing and information in sales office.

ST GEORGE'S PLACE *by* HOPKINS HOMES

**CONSUMER
CODE FOR
HOME BUILDERS**

www.consumercode.co.uk



HOPKINS
HOMES



The Dereham

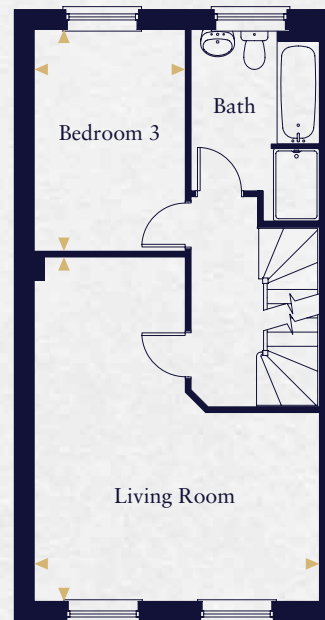
Computer generated image indicative only. External finishes and appearance will vary.

The Dereham

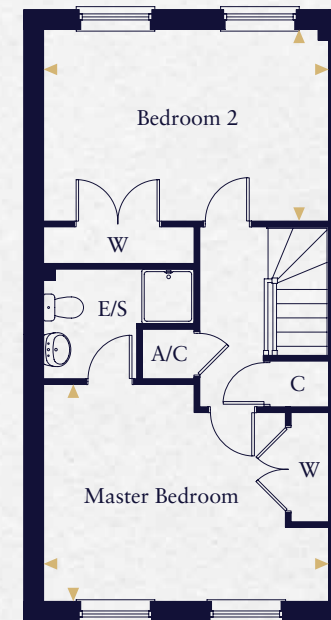
3 bedroom townhouse



Ground Floor



First Floor



Second Floor

Kitchen	4.705m x 3.115m	15'5" x 10'3"
Dining Area	2.960m x 2.473m	9'9" x 8'1"
Living Room	5.690m x 4.705m	18'8" x 15'5"
Study	3.228m x 2.473m	10'7" x 8'1"
Master Bedroom	4.705m x 3.582m	15'5" x 11'9"
Bedroom 2	4.705m x 3.115m	15'5" x 10'3"
Bedroom 3	3.613m x 2.488m	11'10" x 8'2"

This floorplan is indicative of this house type only and does not reflect plot specific variations. Any and all such variations, for example additional windows, are shown on plot specific drawings for this development. Please speak to our sales consultant for details.

◀ Indicates where measurements have been taken from. Computer generated images are a generic indication of a finished house type but are not specific to this development. External finishes, materials and appearance will vary, please refer to plot specific drawing and information in sales office.

ST GEORGE'S PLACE *by* HOPKINS HOMES



HOPKINS
HOMES

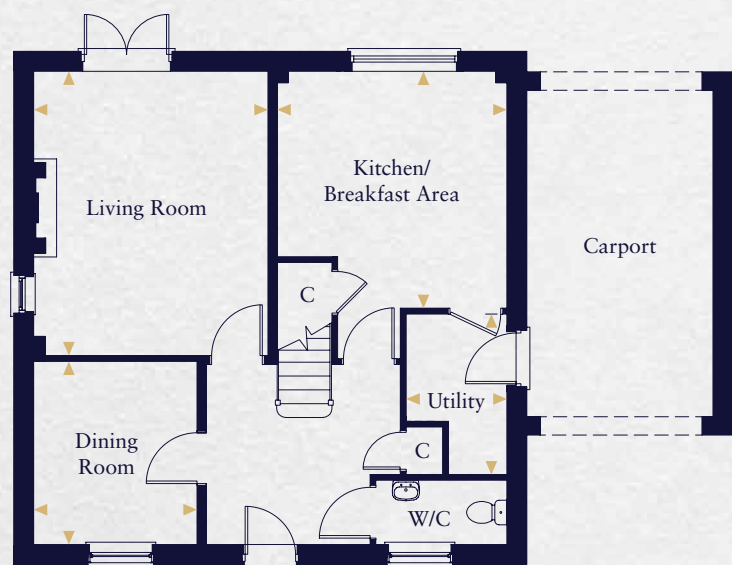


The Heydon

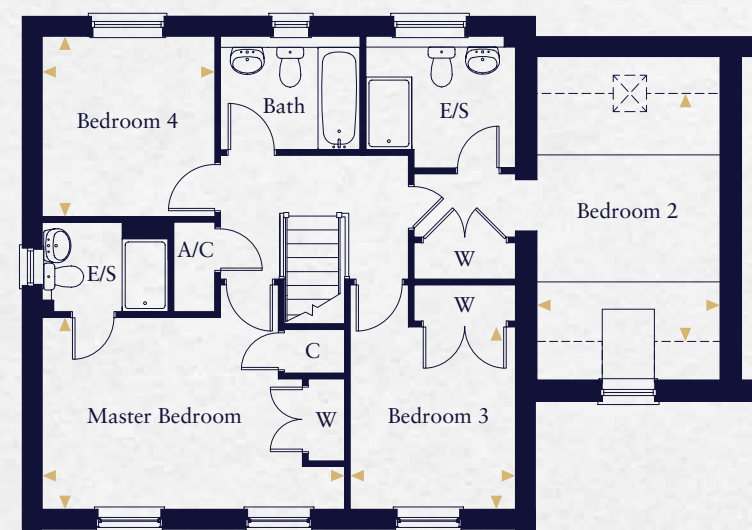
Computer generated image indicative only. External finishes and appearance will vary.

The Heydon

4 bedroom link-attached home



Ground Floor



First Floor

Kitchen/Breakfast Area	3.915m x 3.800m	12'10" x 12'6"
Utility	2.654m x 1.667m	8'7" x 5'6"
Living Room	4.693m x 3.872m	15'5" x 12'8"
Dining Room	3.029m x 2.700m	10'10" x 8'10"
Master Bedroom	4.997m x 3.174m	16'5" x 10'5"
Bedroom 2	4.062m x 3.111m	13'4" x 10'3"
Bedroom 3	3.295m x 2.730m	10'10" x 8'11"
Bedroom 4	2.982m x 2.850m	9'9" x 9'4"

This floorplan is indicative of this house type only and does not reflect plot specific variations. Any and all such variations, for example additional windows, are shown on plot specific drawings for this development. Please speak to our sales consultant for details.

— Indicates reduced head height --- Indicates a reduced head height below 1.5m ☒ Velux Window

◀ Indicates where measurements have been taken from. Computer generated images are a generic indication of a finished house type but are not specific to this development. External finishes, materials and appearance will vary, please refer to plot specific drawing and information in sales office.

ST GEORGE'S PLACE *by* HOPKINS HOMES

**CONSUMER
CODE FOR
HOME BUILDERS**

www.consumercode.co.uk



HOPKINS
HOMES



The Oxburgh

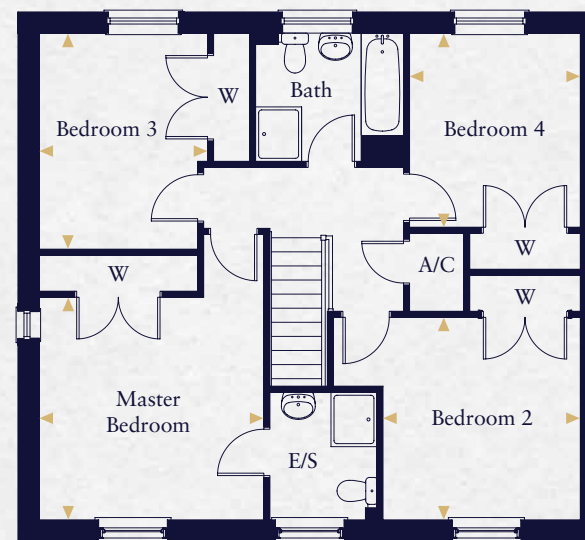
Computer generated image indicative only. External finishes and appearance will vary.

The Oxburgh

4 bedroom detached home



Ground Floor



First Floor

Kitchen/Dining Area	8.948m x 3.199m	29'4" x 10'6"
Utility	2.268m x 1.650m	7'5" x 5'5"
Living Room	4.698m x 3.716m	15'5" x 12'2"
Study	2.987m x 2.949m	9'9" x 9'8"
Master Bedroom	3.716m x 3.680m	12'2" x 12'0"
Bedroom 2	3.348m x 3.262m	10'11" x 10'8"
Bedroom 3	3.572m x 2.785m	11'10" x 9'1"
Bedroom 4	3.209m x 2.823m	10'6" x 9'3"

This floorplan is indicative of this house type only and does not reflect plot specific variations. Any and all such variations, for example additional windows, are shown on plot specific drawings for this development. Please speak to our sales consultant for details.

◀ Indicates where measurements have been taken from. Computer generated images are a generic indication of a finished house type but are not specific to this development. External finishes, materials and appearance will vary, please refer to plot specific drawing and information in sales office.

ST GEORGE'S PLACE *by* HOPKINS HOMES

**CONSUMER
CODE FOR
HOME BUILDERS**

www.consumercode.co.uk



HOPKINS
HOMES

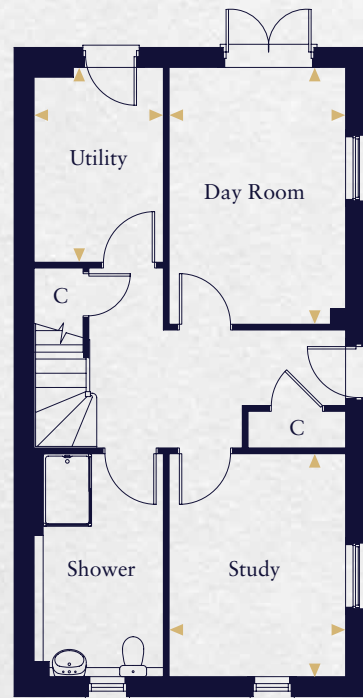


The Buxton

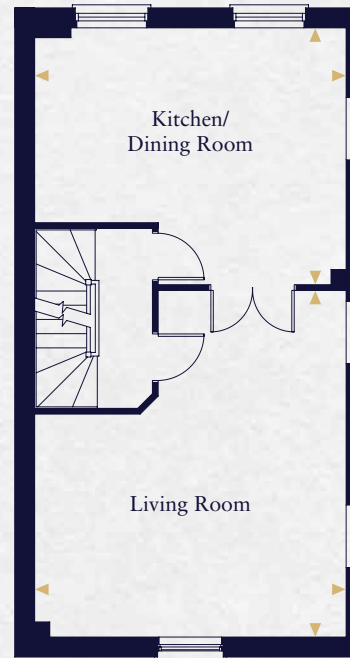
Computer generated image indicative only. External finishes and appearance will vary.

The Buxton

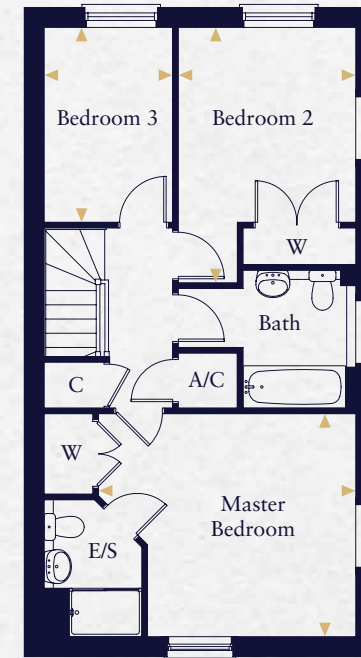
3 bedroom townhouse



Ground Floor



First Floor



Second Floor

Kitchen/Dining Area	5.150m x 4.244m	16'10" x 13'11"
Utility	3.221m x 2.138m	10'3" x 7'0"
Day Room	4.246m x 2.918m	13'11" x 9'6"
Living Room	5.731m x 5.150m	18'9" x 16'10"
Study	3.686m x 2.930m	10'3" x 9'7"
Master Bedroom	4.250m x 3.678m	13'11" x 12'0"
Bedroom 2	4.225m x 2.930m	13'10" x 9'7"
Bedroom 3	3.219m x 2.120m	10'6" x 6'11"

This floorplan is indicative of this house type only and does not reflect plot specific variations. Any and all such variations, for example additional windows, are shown on plot specific drawings for this development. Please speak to our sales consultant for details.

◀ Indicates where measurements have been taken from. Computer generated images are a generic indication of a finished house type but are not specific to this development. External finishes, materials and appearance will vary, please refer to plot specific drawing and information in sales office.

ST GEORGE'S PLACE *by* HOPKINS HOMES



HOPKINS
HOMES



The Sandringham

Computer generated image indicative only. External finishes and appearance will vary.

The Sandringham

2 bedroom home



Ground Floor



First Floor

Kitchen/Dining Area	5.450m x 3.129m	17'10" x 10'3"
Living Room	5.450m x 3.537m	17'10" x 10'9"
Master Bedroom	4.563m x 3.885m	15'0" x 12'9"
Bedroom 2	2.892m x 2.307m	9'6" x 7'7"
Bedroom 3	2.650m x 2.440m	8'8" x 8'0"

This floorplan is indicative of this house type only and does not reflect plot specific variations. Any and all such variations, for example additional windows, are shown on plot specific drawings for this development. Please speak to our sales consultant for details.

— Indicates reduced head height ☒ Velux Window

◀ Indicates where measurements have been taken from. Computer generated images are a generic indication of a finished house type but are not specific to this development. External finishes, materials and appearance will vary, please refer to plot specific drawing and information in sales office.

ST GEORGE'S PLACE *by* HOPKINS HOMES



HOPKINS
HOMES

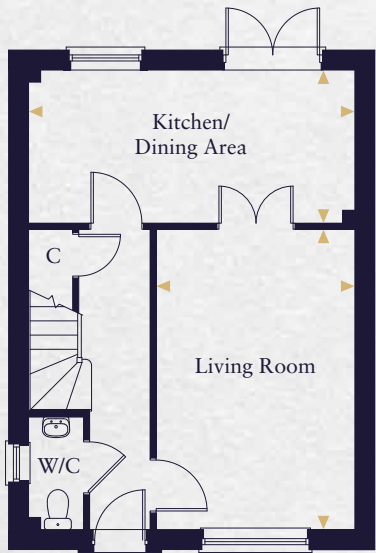


The Crownthorpe

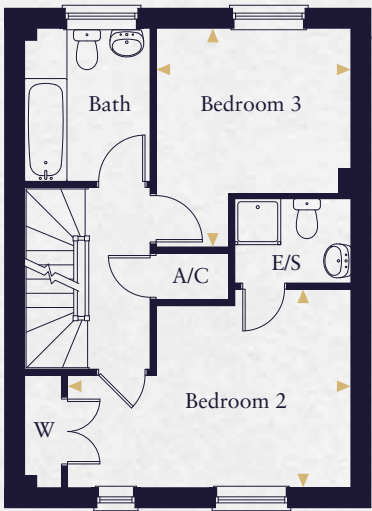
Computer generated image indicative only. External finishes and appearance will vary.

The Crownthorpe

3 bedroom home



Ground Floor



First Floor



Second Floor

Kitchen/Dining Area	5.395m x 2.532m	17'8" x 8'3"
Living Room	4.965m x 3.285m	17'10" x 10'9"
Master Bedroom	4.136m x 2.960m	15'0" x 12'9"
Bedroom 2	4.685m x 3.284m	9'6" x 7'7"
Bedroom 3	3.617m x 3.220m	11'10" x 10'6"

This floorplan is indicative of this house type only and does not reflect plot specific variations. Any and all such variations, for example additional windows, are shown on plot specific drawings for this development. Please speak to our sales consultant for details.

— Indicates reduced head height --- Indicates a reduced head height below 1.5m ☒ Velux Window

◀ Indicates where measurements have been taken from. Computer generated images are a generic indication of a finished house type but are not specific to this development. External finishes, materials and appearance will vary, please refer to plot specific drawing and information in sales office.

ST GEORGE'S PLACE *by* HOPKINS HOMES

**CONSUMER
CODE FOR
HOME BUILDERS**

www.consumercode.co.uk



HOPKINS
HOMES



The Illington
Apartments

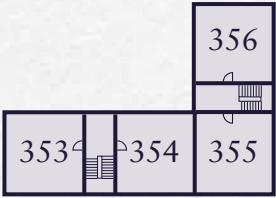
Computer generated image indicative only. External finishes and appearance will vary.

The Illington Apartments

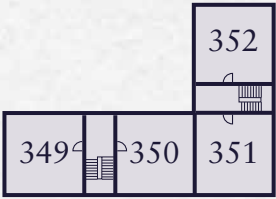
1 bedroom apartment



Kitchen/Living/ Dining Area	6.768m x 3.315m	22'3" x 10'11"
Bedroom	4.375m x 3.358m	14'4" x 11'0"



Second Floor



First Floor



Ground Floor

This floorplan is indicative of this house type only and does not reflect plot specific variations. Any and all such variations, for example additional windows, are shown on plot specific drawings for this development. Please speak to our sales consultant for details.

*Window locations differ on plots 347, 351 and 355, please see Sales Advisor

◀ Indicates where measurements have been taken from. Computer generated images are a generic indication of a finished house type but are not specific to this development. External finishes, materials and appearance will vary, please refer to plot specific drawing and information in sales office.

ST GEORGE'S PLACE *by* HOPKINS HOMES

**CONSUMER
CODE FOR
HOME BUILDERS**

www.consumercode.co.uk



HOPKINS
HOMES

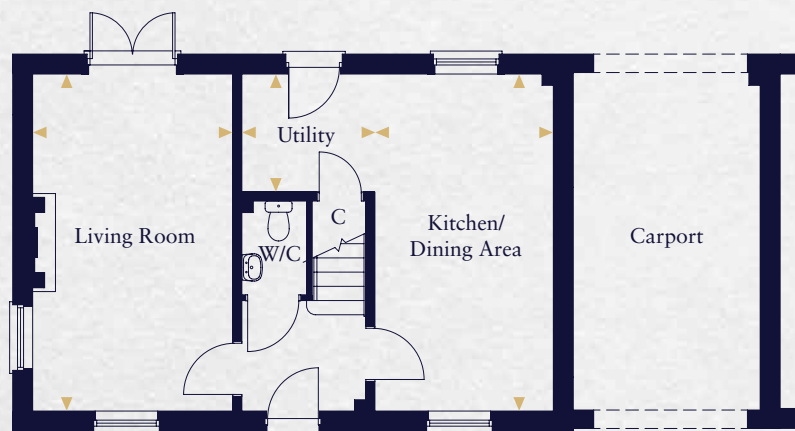


The Middleton

Computer generated image indicative only. External finishes and appearance will vary.

The Middleton

A 4 bedroom link-attached home



Ground Floor



First Floor

Kitchen/Dining Area	5.572m x 2.950m	18'3" x 9'8"
Utility	2.200m x 1.950m	7'2" x 6'4"
Living Room	5.572m x 3.310m	18'3" x 10'10"
Master Bedroom	4.532m x 3.375m	14'9" x 11'0"
Bedroom 2	4.465m x 2.992m	14'8" x 9'10"
Bedroom 3	3.111m x 2.441m	10'2" x 8'0"
Bedroom 4	3.391m x 2.103m	11'1" x 6'10"

This floorplan is indicative of this house type only and does not reflect plot specific variations. Any and all such variations, for example additional windows, are shown on plot specific drawings for this development. Please speak to our sales consultant for details.

— Indicates reduced head height --- Indicates a reduced head height below 1.5m ☒ Velux Window

◀ Indicates where measurements have been taken from. Computer generated images are a generic indication of a finished house type but are not specific to this development. External finishes, materials and appearance will vary, please refer to plot specific drawing and information in sales office.

ST GEORGE'S PLACE *by* HOPKINS HOMES

**CONSUMER
CODE FOR
HOME BUILDERS**

www.consumercode.co.uk



HOPKINS
HOMES



The Hanworth
Apartments

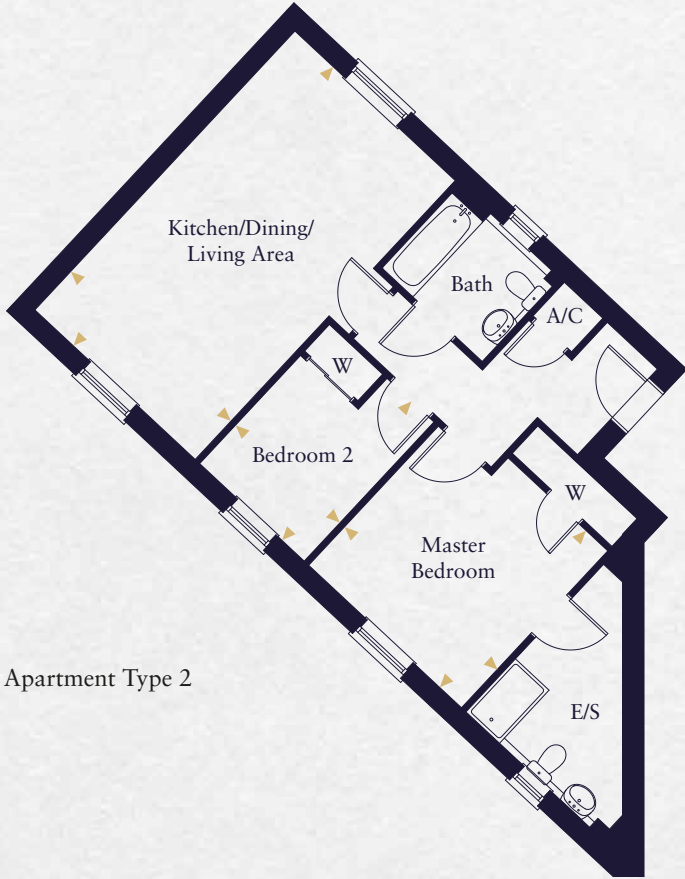
Computer generated image indicative only. External finishes and appearance will vary.

The Hanworth Apartments

2 bedroom apartment



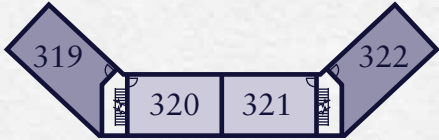
Apartment Type 1



Apartment Type 2



Second Floor



First Floor



Ground Floor

■ Type 1 ■ Type 2

Kitchen/Dining/Living Area	6.305m x 3.625m	20'8" x 11'11"
Master Bedroom	3.445m x 3.145m	11'4" x 10'4"
Bedroom 2	3.145m x 2.365m	10'4" x 7'7"

Kitchen/Dining/Living Area	6.305m x 3.625m	20'8" x 11'11"
Master Bedroom	3.548m x 3.455m	11'7" x 11'4"
Bedroom 2	3.145m x 2.365m	10'4" x 7'7"

This floorplan is indicative of this house type only and does not reflect plot specific variations. Any and all such variations, for example additional windows, are shown on plot specific drawings for this development. Please speak to our sales consultant for details.

◀ Indicates where measurements have been taken from. Computer generated images are a generic indication of a finished house type but are not specific to this development. External finishes, materials and appearance will vary, please refer to plot specific drawing and information in sales office.