



HOPKINS
HOMES

Bournewood Park

HALSTEAD, ESSEX

Traditionally styled 1, 2, 3 and 4-bedroom homes



Exceptional homes, inspired by Essex.

Located in the charming countryside on the outskirts of the historic market town of Halstead, Bournemouth Park is a thoughtfully designed new development by Hopkins Homes, offering a range traditionally styled 1, 2, 3 and 4-bedroom homes.

Set against a backdrop of rolling fields and mature trees, Bournemouth Park combines the tranquillity of rural living with the convenience of town amenities just minutes away. Whether you're taking your first step onto the property ladder, growing your family, or looking to downsize in comfort, you'll find a home that fits your lifestyle in this picturesque new community.



Each Hopkins home at Bournemouth Park is built with the care, quality and character our name is known for. From traditional façades that complement the local architecture to contemporary, light-filled interiors, every detail is considered to provide modern comfort with timeless appeal.

Expect stylish open-plan kitchens, spacious living areas, and carefully landscaped surroundings – all designed to create a sense of place and a home you'll be proud of.

Beautifully built homes *since 1993.*

At Hopkins Homes, we believe a home should be more than a place to live – it should be where life unfolds, memories are made, and futures are built.

For over three decades, we've had the privilege of creating homes across the East of England that are rich in character, thoughtfully designed and built to stand the test of time. Every development is carefully shaped to reflect its surroundings, drawing on local character and landscape so it feels like it truly belongs – not imposed upon it.

We focus on the details that matter most – thoughtfully designed spaces, natural light, energy efficiency, and carefully selected materials that combine beauty with lasting quality. The result is homes that are not only visually appealing, but also comfortable, practical, and more economical to run.

Craft, care and social responsibility sit at the heart of what we do, from the way we design and build, to the communities we help create. We recognise our responsibility to the environment and to the people who will live in our homes for years to come. That's why we continually invest in greener building methods and technologies that reduce energy bills and carbon footprints – without compromising on the quality and beauty that define every Hopkins home.

Buying a new home is a significant step, and we aim to make the journey as smooth and supported as possible – from first visit through to aftercare once you've moved in.

Our attention to detail and commitment to quality have earned us a reputation we're proud of, reflected in the people who choose to live in our homes – with 96.9% of customers saying they would recommend us to a friend.*

*HBF Survey Results 2026



“Buying your first home is daunting enough but luckily for me, Hopkins Homes was with me every step of the way.”

Ella Dowling – Woodland Rise, Barrow

“We love our new home. The house itself is beautifully designed and finished. All those working on the development are friendly and helpful and nothing has been too much trouble, from supporting us during the purchase through to answering queries in our first few weeks of ownership.”

Sarah Brown – Birch Gate, Wymondham

Your *new* surroundings.

UNDER 5 MILES

- 1 Tesco Superstore 1.1 Miles
- 2 Empire Theatre 1.1 miles
- 3 Elizabeth Courtald Surgery 1.2 miles
- 4 Holy Trinity Church of England Primary School 1.3 miles
- 5 Halstead High Street 1.5 Miles
- 6 Halstead Hospital 1.5 Miles
- 7 The Ramsey Academy 1.7 miles
- 8 Box Mill Scenic Walk 1.9 miles
- 9 St Andrews Primary School 2 miles
- 10 Redwood Grove 2.3 miles
- 11 Broaks Wood 2.7 miles
- 12 Gosfield Sandpits 2.7 miles
- 13 Belcher's & Broadfield Woods 3.4 miles
- 14 Gosfield Lake Golf Club 3.9 miles
- 15 Colne Valley Golf Club 4.9 miles
- 16 Halstead Public Garden 9 miles

UNDER 10 MILES

- 17 The Essex Golf & Country Club 7.2 miles
- 18 Markshall Gardens 9.6 miles
- 19 Braintree Golf Club 5.7 miles
- 20 Braintree Village 8.4 miles
- 21 Braintree Station 8.3 miles
- 22 Hedingham School & Sixth Form 5.4 miles
- 23 Hedingham Castle 6.5 miles
- 24 Coggeshall 9.2 miles
- 25 Sudbury 9.8 miles

UNDER 25 MILES

- 26 Marks Tey Station 12.5 miles
- 27 Chelmsford Racecourse 12.4 miles
- 28 Bond Street Chelmsford 21 miles
- 29 Stansted Airport 24.6 miles
- 30 Colchester 15.2 miles



The perfect place to call home.

Halstead is one of Essex's most characterful market towns, with a history that stretches back centuries.. The River Colne runs through the heart of it, with a riverside walk that follows the water through the centre of town. Independent boutique shops, family butchers, bakers and cafés line the high street. Tudor and Georgian architecture gives the town its character, while 15th century inns sit alongside restaurants covering everything from Essex pub classics to contemporary global cooking.

Halstead in Bloom has held a Gold award from RHS Britain in Bloom every year since 2009, and has been named Best Town in Anglia in Bloom on five occasions. From the Victorian public gardens – with their central bandstand and summer music events – to the seasonal floral displays throughout the town, it is a place that takes visible pride in how it looks. Summer and Christmas fayres, a torchlight procession, and carol events give the town a community calendar that runs year-round.

The Townsford Mill straddles the River Colne and is one of Halstead's most recognisable landmarks – a reminder of the town's weaving history that now houses one of the largest antiques centres on the Essex and Suffolk border. The Empire Theatre, a 300-seat venue, shows films and hosts tribute acts, country, jazz and pantomime throughout the year.



Markshall Estate Gardens and Arboretum, Coggeshall



Shop local independent retailers



The practical side of daily life is well covered. Supermarkets sit close by for everyday essentials, alongside the independent traders and grocers in the town. Halstead Leisure Centre provides a full range of facilities for families and those who want to stay active close to home.

The surrounding area has a strong offering for golfers, with several well-regarded courses within easy reach. For those who prefer to explore on foot or by bike, the Colne Valley provides an accessible network of walking and cycling routes. Rugby, cricket, and a range of other outdoor sporting clubs are also active in and around the town.

Just under four miles away, Hedingham Castle provides a notable day out. A well-preserved Norman keep set within grounds that host events throughout the year. Nearby Coggeshall is one of Essex's most attractive villages, with a strong collection of medieval timber-framed buildings and a history that stretches back to the 12th century

Halstead has a solid track record for schooling. Local nurseries, primary and secondary schools have built genuine reputations for pastoral care, community ethos, and academic support, giving families a reliable foundation without needing to look further afield. Halstead's General Hospital continues to serve the area with a well-regarded community healthcare provision.

Braintree sits to the south and brings with it a broader retail offer, including Braintree Village – an outlet shopping destination with more than 90 brands across fashion, homeware, and lifestyle. Colchester, around 20 minutes by road, adds a further layer of culture, entertainment, and history as one of Britain's oldest recorded towns, with a zoo set across 60 acres of parkland that is well worth a visit for families. For those who want something different at the weekend, Chelmsford is within reach and home to Bond Street – a contemporary shopping and leisure quarter in the city centre. The Essex coast, with its harbour towns and open beaches, is around 20 miles away.



Colchester Castle



Make your next move *with us.*

Moving home is one of the biggest decisions most people make, and it rarely feels straightforward. At Hopkins Homes, our role is to make the process as clear and manageable as possible. From your first conversation through to the day you collect your keys we are here to guide you every step of the way.

If you have a property to sell, we offer two schemes designed to remove the usual uncertainty. With Part Exchange, we can buy your current home directly, so you can move forward without a chain. With Smooth Move, we work with a recommended estate agent to market and sell your existing property, with our contribution towards your selling costs. Both schemes are designed to give you greater control over your timeline and reduce the stress that typically comes with moving.

For first-time buyers, those moving up the ladder, or anyone who simply wants to feel more informed, our Sales Executives are on hand to guide you through each stage. There is no question too small. We also provide a range of practical buying guides to help you understand the process at your own pace.

Every Hopkins home comes with a 10 year new homes warranty, giving you the security and peace of mind that comes with buying new; protection that an older property simply cannot offer. Combined with our Customer Charter, which sets out the standards you can expect from us at every stage, you will know exactly what you are buying and what to expect from us after you move in.



Why make your next move with us to Bournemouth Park



Energy efficient homes with air source heat pumps and underfloor heating to the ground floor



Traditionally designed homes reflecting the local architecture



Offers and schemes available exclusive to new build homes



A blank canvas, waiting for you to add your personal touch



Ultrafast broadband



10 year new homes warranty



Contemporary high specification kitchens



Wide range of flexible layouts to choose from



Acres of on-site open space



High specification homes with EV charging points



The Redwood, The Bocking, The Acton, The Orford & The Waveney

The Pinewood, The Bentley, The Boxford & The Boxford Bay

The Brampton, The Ixworth, The Milton & The Newton

The Brantham & The Thaxted

KITCHEN

Choice of flat front units and drawers	•			
Choice of shaker style units and drawers		•	•	•
LED Lighting to wall units	•	•	•	•
Choice of slimline laminate worktop, matching upstand and splashback	•	•	•	•
White quartz kitchen sink with chrome mixer tap	•	•	•	•
Haier single oven with 'Air Fry' cooking	•			
Two Haier single ovens both with 'Air Fry' cooking		•	•	•
Haier 4 zone induction hob	•	•		
Haier 6 zone induction hob			•	•
Integrated cooker hood	•	•	•	•
Integrated 50/50 Fridge Freezer	•	•	•	•
Integrated dishwasher	•	•	•	•
Integrated washing machine (only applicable when washing machine located in the kitchen)	•			
Stainless steel sink with chrome tap in utility room (where applicable)		•	•	•

BATHROOM & EN SUITE

Choice of ceramic floor and wall tiles	•	•	•	•
Ceramic floor tiles to bathrooms and en suites	•	•	•	•
Half height tiling to walls with sanitaryware	•	•	•	•
Full height tiling around the bath to homes with one en suite				•
Full height tiling to the bath to homes with no en suite	•			
Full height tiling to separate shower cubicles	•	•	•	•
Roca white sanitaryware	•	•	•	•
Chrome mixer taps	•	•	•	•

ELECTRICAL

White sockets, TV point, data point and switches (Refer to working drawing for location)	•	•	•	•
White downlights to kitchens, dining areas when open plan, utility, bathroom & en suites	•	•	•	•
Low energy pendant lighting to all remaining areas	•	•	•	•
Smoke alarm (refer to working drawing for location)	•	•	•	•
Carbon monoxide alarm (refer to working drawing for location)	•	•	•	•

INTERNAL FEATURES

Timber staircase with oak handrail and newel cap	•	•	•	•
5 panel vertically grooved doors with chrome ironmongery	•	•	•	•
All walls painted in matt white emulsion	•	•	•	•
All woodwork painted white	•	•	•	•
Amtico Spacia flooring to ground floor open plan kitchen/living/dining areas, hallway and WC	•	•	•	•
Mirrored sliding wardrobes to principal bedroom	•	•	•	•
Traditional Ogee style skirting and architraves	•	•	•	•

EXTERNAL FEATURES

Landscaped front garden	•	•	•	•
Rear garden rotovated	•	•	•	•
Patio in natural finish paving slabs	•	•	•	•
Highly efficient double glazed UPVC windows with matching patio doors or aluminum bi-fold doors (as shown on plans)	•	•	•	•
Up & Down led light as indicated on working drawings	•	•	•	•
Composite front door with multi-point locking system	•	•	•	•

HEATING

Air source heat pump	•	•	•	•
Underfloor heating to the ground floor	•	•	•	•
Radiators to upper floors	•	•	•	•
Gloss white towel rails to bathroom and en suites	•	•	•	•

Bournewood Park.

HALSTEAD, ESSEX

Key

- s/s** SUB STATION
- V** VISITOR PARKING
- S** SALES CENTRE PARKING
- (h)** HANDED PLOT
- P/S** PUMP STATION
- PRE-SOLD HOMES**
- SHOW HOME**



1 Bedroom Homes

- THE BOCKING**
Plot 137(h)
- THE REDWOOD**
Plot 138(h)

2 Bedroom Homes

- THE WAVENEY**
Plots 25(h), 26, 27(h), 28, 147(h), 148, 171, 172(h)
- THE ORFORD**
Plots 13(h), 14, 181, 182(h), 183, 184(h)
- THE ACTON**
Plots 129(h), 130, 162, 163(h)

3 Bedroom Homes

- THE PINWOOD**
Plots 6(h), 7, 8(h), 9, 11(h), 12, 121(h), 122, 126(h), 127, 145(h), 146, 153, 154(h), 169, 170(h), 179, 180(h)
- THE BOXFORD**
Plots 29, 150(h), 164(h)
- THE BOXFORD BAY**
Plots 36, 189
- THE BENTLEY**
Plot 141(h)
- THE MILTON**
Plots 131(h), 132, 160, 161(h)

4 Bedroom Homes

- THE IXWORTH**
Plots 3, 20(h), 21, 125, 142(h), 193(h), 195
- THE BRAMPTON**
Plots 128, 178(h)
- THE NEWTON**
Plots 1(h), 19(h), 24(h), 120(h), 144(h), 149, 155(h), 192
- THE BRANTHAM**
Plots 2(h), 4(h), 22(h), 23, 123, 124, 143(h), 194(h), 196
- THE THAXTED**
Plots 5, 10(h), 197(h)



The computer generated images, floor plans, configurations and layouts are included for guidance only. External finishes, landscaping and levels will vary, please refer to drawings in sales office. Development layout not to scale, for indication only.



HOPKINS
HOMES

The Bocking.

ONE BEDROOM MAISONETTE

Homes 137(h)

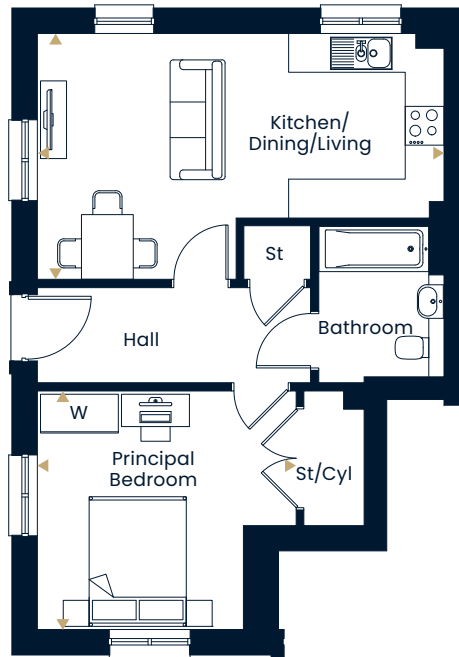


The Bocking.

ONE BEDROOM MAISONETTE

Homes 137(h)

Ground Floor Flat



Kitchen/ Dining/Living	6.28 x 3.80	20' 7" x 12' 5"
Bedroom	4.00 x 3.68	13' 1" x 12' 1"

50m² | 541ft²

• Cyl - Water Cylinder • St Storage • W Wardrobe • W.C Toilet/cloakroom

(h) indicates handed plot. This floorplan is indicative of this house type only and does not reflect home specific variations. Any and all such variations, for example additional windows, are shown on home specific drawings for this development. The positions of the appliances and furniture are indicative and not to scale. Please speak to our sales executive for details. Computer generated images are a generic indication of a finished house type but are not specific to this development. External finishes, materials and appearance will vary, please refer to home specific drawing and information in sales office.





HOPKINS
HOMES

The Redwood.

ONE BEDROOM MAISONETTE

Homes 138(h)

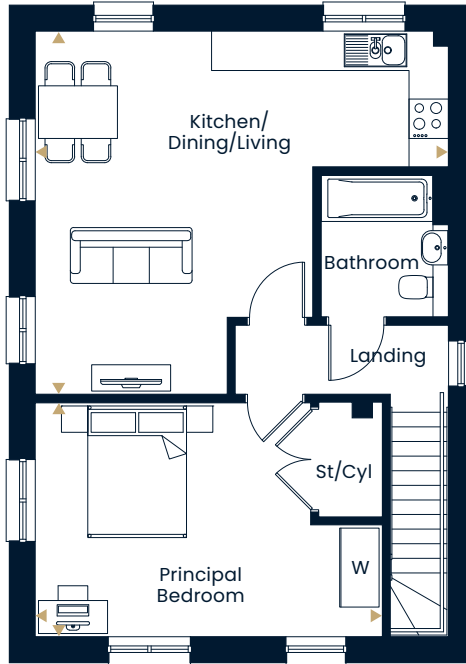


The Redwood.

ONE BEDROOM MAISONETTE

Homes 138(h)

First Floor Flat

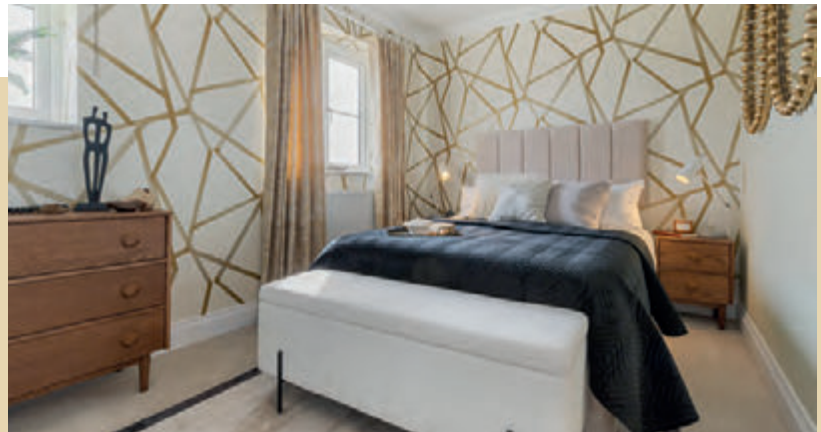


Kitchen/Dining/Living	6.28 x 5.52	20' 7" x 18' 1"
Bedroom	5.28 x 3.56	17' 4" x 11' 8"
Bathroom	2.00 x 2.17	6' 7" x 7' 1"

62m² | 677ft²

• Cyl - Water Cylinder • St Storage • W Wardrobe • W.C Toilet/cloakroom

(h) indicates handed plot. This floorplan is indicative of this house type only and does not reflect home specific variations. Any and all such variations, for example additional windows, are shown on home specific drawings for this development. The positions of the appliances and furniture are indicative and not to scale. Please speak to our sales executive for details. Computer generated images are a generic indication of a finished house type but are not specific to this development. External finishes, materials and appearance will vary, please refer to home specific drawing and information in sales office.





HOPKINS
HOMES

The Waveney.

TWO BEDROOM HOUSE

Homes 25(h), 26, 27(h), 28, 147(h), 148, 171 & 172(h)

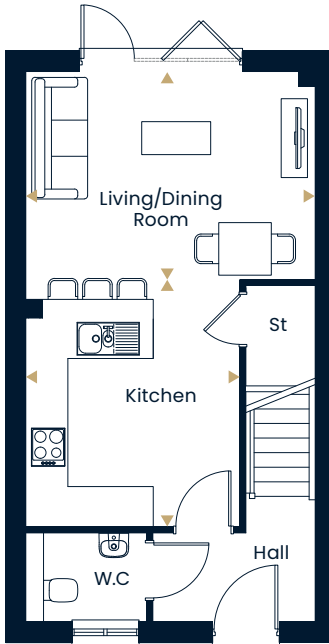


The Waveney.

TWO BEDROOM HOUSE

Homes 25(h), 26, 27(h), 28, 147(h), 148, 171 & 172(h)

Ground Floor



First Floor



Living/Dining	4.30 x 3.11	14' 1" x 10' 2"
Kitchen	3.21 x 3.76	10' 6" x 12' 4"

Principal Bedroom	4.30 x 3.11	14' 1" x 10' 2"
Bedroom 2	4.30 x 2.74	14' 1" x 9' 0"

71m² | 768ft²

- SB - Stair Bulkhead • Cyl - Water Cylinder • St Storage
- W Wardrobe • W.C Toilet/cloakroom

(h) indicates handed plot. This floorplan is indicative of this house type only and does not reflect home specific variations. Any and all such variations, for example additional windows, are shown on home specific drawings for this development. The positions of the appliances and furniture are indicative and not to scale. Please speak to our sales executive for details. Computer generated images are a generic indication of a finished house type but are not specific to this development. External finishes, materials and appearance will vary, please refer to home specific drawing and information in sales office.





HOPKINS
HOMES

The Acton.

TWO BEDROOM HOUSE

Homes 129(h), 130, 162 & 163(h)

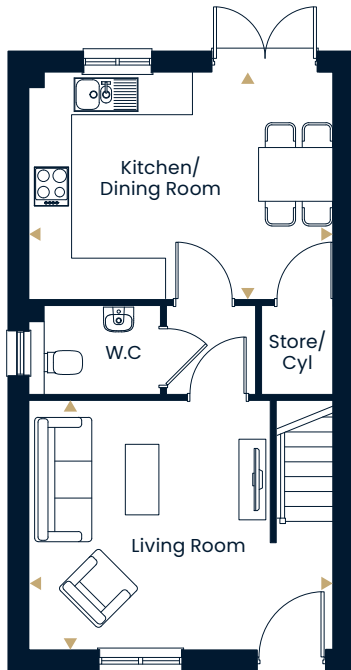


The Acton.

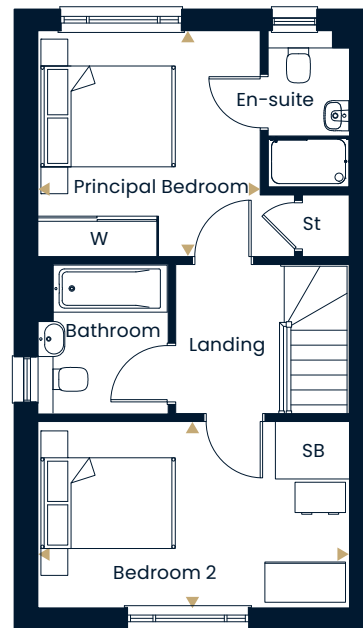
TWO BEDROOM HOUSE

Homes 129(h), 130, 162 & 163(h)

Ground Floor



First Floor



Kitchen/Dining	4.63 x 3.35	15' 2" x 10' 11"
Living Room	4.63 x 3.67	15' 2" x 12' 0"

Principal Bedroom	3.29 x 3.34	10' 9" x 10' 11"
Bedroom 2	4.63 x 2.74	15' 2" x 9' 0"

79m² | 850ft²

- SB - Stair Bulkhead • Cyl - Water Cylinder • St Storage
- W Wardrobe • W.C Toilet/cloakroom

(h) indicates handed plot. This floorplan is indicative of this house type only and does not reflect home specific variations. Any and all such variations, for example additional windows, are shown on home specific drawings for this development. The positions of the appliances and furniture are indicative and not to scale. Please speak to our sales executive for details. Computer generated images are a generic indication of a finished house type but are not specific to this development. External finishes, materials and appearance will vary, please refer to home specific drawing and information in sales office.





HOPKINS
HOMES

The Orford.

TWO BEDROOM HOUSE

Homes 13(h), 14, 181, 182(h), 183 & 184(h)

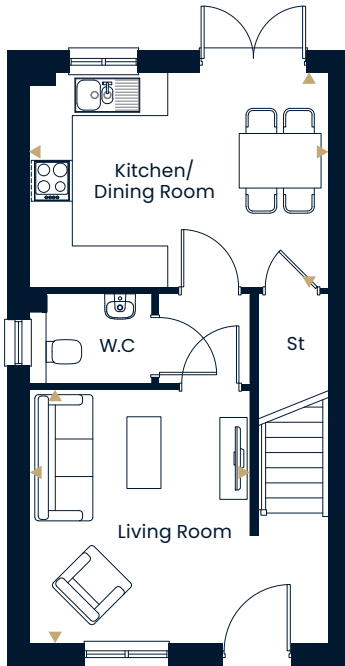


The Orford.

TWO BEDROOM HOUSE

Homes 13(h), 14, 181, 182(h), 183 & 184(h)

Ground Floor



First Floor



Kitchen/Dining	4.30 x 3.11	14' 1" x 10' 2"
Living Room	3.21 x 3.67	10' 6" x 12' 0"

Principal Bedroom	4.30 x 3.11	14' 1" x 10' 2"
Bedroom 2	4.30 x 2.74	14' 1" x 9' 0"

71m² | 768ft²

- SB - Stair Bulkhead • Cyl - Water Cylinder • St Storage
- W Wardrobe • W.C Toilet/cloakroom

(h) indicates handed plot. This floorplan is indicative of this house type only and does not reflect home specific variations. Any and all such variations, for example additional windows, are shown on home specific drawings for this development. The positions of the appliances and furniture are indicative and not to scale. Please speak to our sales executive for details. Computer generated images are a generic indication of a finished house type but are not specific to this development. External finishes, materials and appearance will vary, please refer to home specific drawing and information in sales office.





HOPKINS
HOMES

The Pinewood.

THREE BEDROOM HOUSE

Homes 6(h), 7, 8(h), 9, 11(h), 12, 121(h), 122, 126, 127, 145(h), 146, 153, 154(h), 169, 170(h), 179 & 180(h)



The Pinewood.

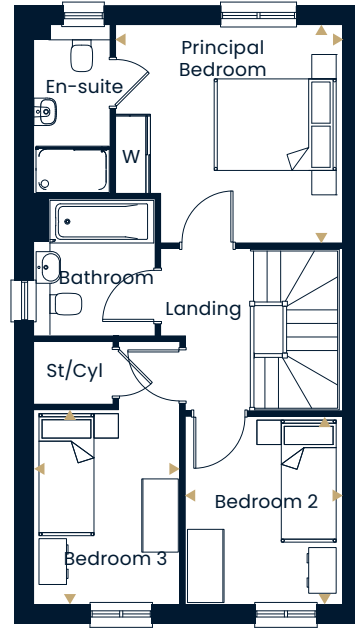
THREE BEDROOM HOUSE

Homes 6(h), 7, 8(h), 9, 11(h), 12, 121(h), 122, 126 (h), 127, 145(h), 146, 153, 154(h), 169, 170(h), 179 & 180(h)

Ground Floor



First Floor



Kitchen/Dining	4.97 x 3.52	16' 4" x 11' 6"
Living Room	2.78 x 5.80	9' 2" x 19' 0"

Principal Bedroom	3.63 x 3.53	11' 11" x 11' 7"
Bedroom 2	2.34 x 3.14	7' 8" x 10' 4"
Bedroom 3	2.51 x 3.04	8' 3" x 10' 0"

93m² | 1009ft²

• Cyl - Water Cylinder • St Storage • W Wardrobe • W.C Toilet/cloakroom

(h) indicates handed plot. This floorplan is indicative of this house type only and does not reflect home specific variations. Any and all such variations, for example additional windows, are shown on home specific drawings for this development. The positions of the appliances and furniture are indicative and not to scale. Please speak to our sales executive for details. Computer generated images are a generic indication of a finished house type but are not specific to this development. External finishes, materials and appearance will vary, please refer to home specific drawing and information in sales office.





HOPKINS
HOMES

The Boxford.

THREE BEDROOM HOUSE

Homes 29, 150(h) & 164(h)

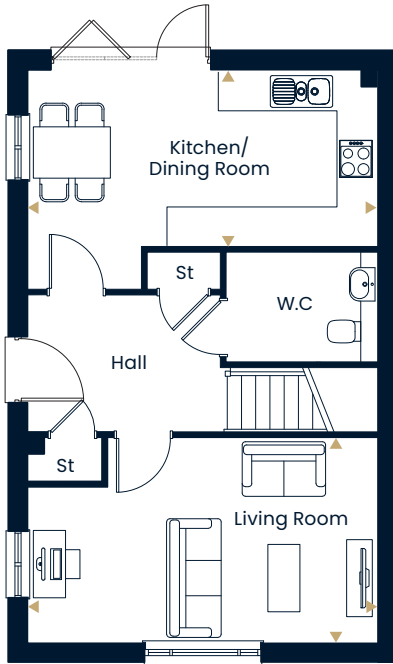


The Boxford.

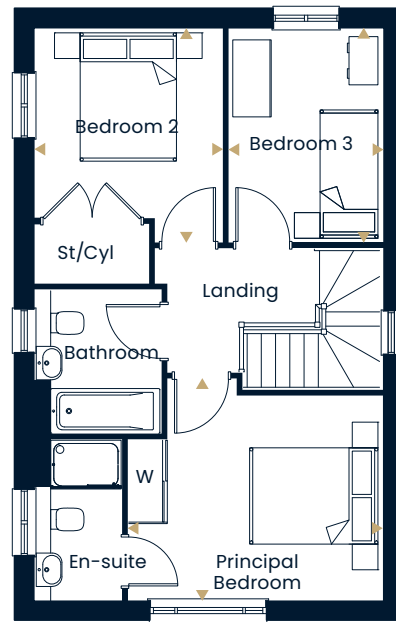
THREE BEDROOM HOUSE

Homes 29, 150(h) & 164(h)

Ground Floor



First Floor



Kitchen/Dining	5.38 x 2.70	17' 8" x 8' 10"
Living Room	5.38 x 3.13	17' 8" x 10' 3"

Principal Bedroom	3.86 x 3.42	12' 8" x 11' 3"
Bedroom 2	2.90 x 3.29	9' 6" x 10' 10"
Bedroom 3	2.36 x 3.29	7' 9" x 10' 10"

95m² | 1026ft²

• Cyl - Water Cylinder • St Storage • W Wardrobe • W.C Toilet/cloakroom

(h) indicates handed plot. This floorplan is indicative of this house type only and does not reflect home specific variations. Any and all such variations, for example additional windows, are shown on home specific drawings for this development. The positions of the appliances and furniture are indicative and not to scale. Please speak to our sales executive for details. Computer generated images are a generic indication of a finished house type but are not specific to this development. External finishes, materials and appearance will vary, please refer to home specific drawing and information in sales office.





HOPKINS
HOMES

The Boxford Bay.

THREE BEDROOM HOUSE

Homes 36 & 189

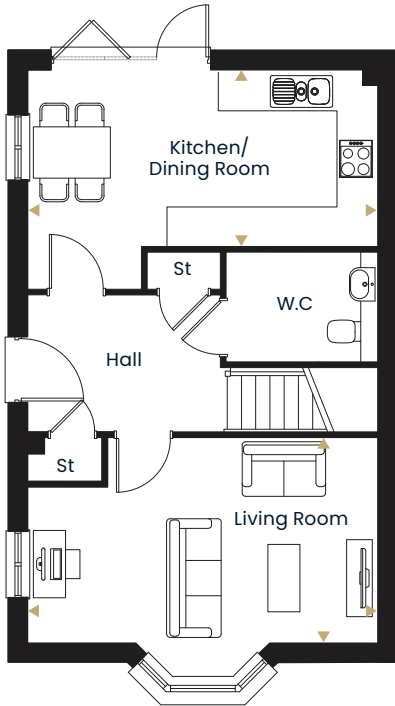


The Boxford Bay.

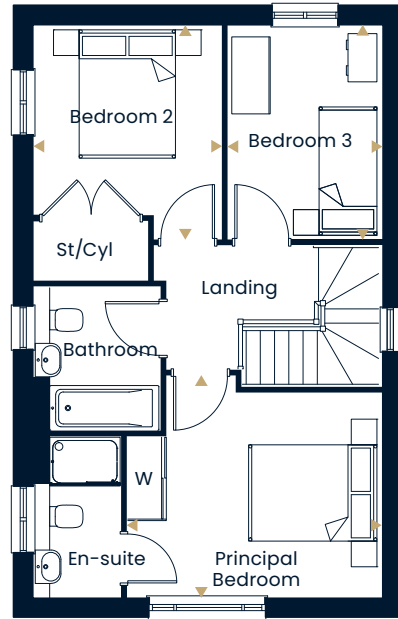
THREE BEDROOM HOUSE

Homes 36 & 189

Ground Floor



First Floor



Kitchen/Dining	5.38 x 2.70	17' 8" x 8' 10"
Living Room	5.38 x 3.13	17' 8" x 10' 3"

Principal Bedroom	3.86 x 3.42	12' 8" x 11' 3"
Bedroom 2	2.90 x 3.29	9' 6" x 10' 10"
Bedroom 3	2.36 x 3.29	7' 9" x 10' 10"

96m² | 1035ft²

• Cyl - Water Cylinder • St Storage • W Wardrobe • W.C Toilet/cloakroom

(h) indicates handed plot. This floorplan is indicative of this house type only and does not reflect home specific variations. Any and all such variations, for example additional windows, are shown on home specific drawings for this development. The positions of the appliances and furniture are indicative and not to scale. Please speak to our sales executive for details. Computer generated images are a generic indication of a finished house type but are not specific to this development. External finishes, materials and appearance will vary, please refer to home specific drawing and information in sales office.





HOPKINS
HOMES

The Bentley.

THREE BEDROOM HOUSE

Home 141(as)

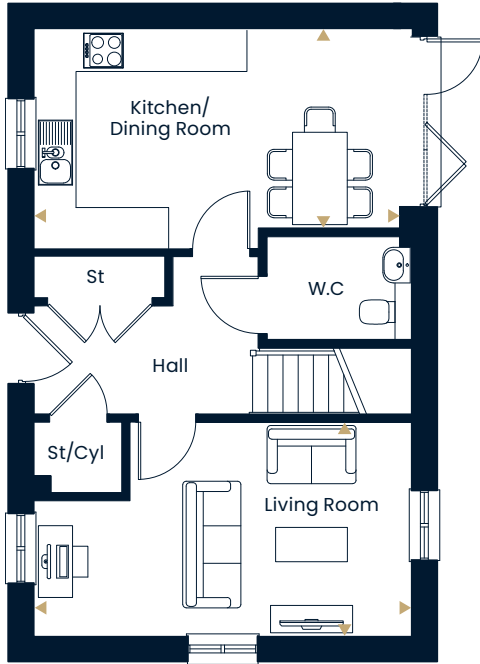


The Bentley.

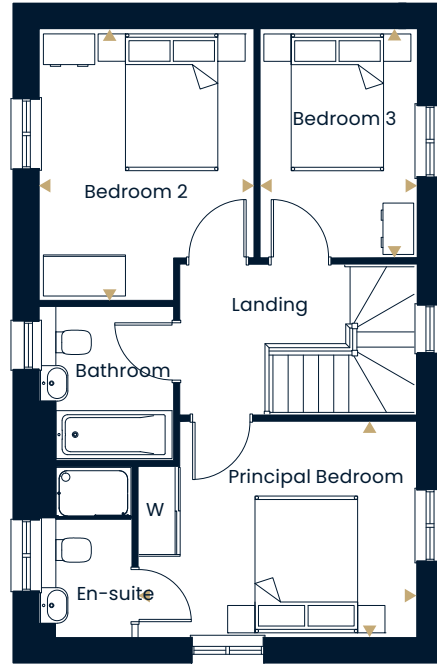
THREE BEDROOM HOUSE

Home 141

Ground Floor



First Floor



Kitchen/Dining	5.49 x 2.88	18' 0" x 9' 6"
Living Room	5.49 x 3.12	18' 0" x 10' 3"

Principal Bedroom	4.05 x 3.13	13' 3" x 10' 3"
Bedroom 2	3.11 x 3.93	10' 3" x 12' 11"
Bedroom 3	2.26 x 3.31	7' 5" x 10' 10"

97m² | 1047ft²

• Cyl - Water Cylinder • St Storage • W Wardrobe • W.C Toilet/cloakroom

(h) indicates handed plot. This floorplan is indicative of this house type only and does not reflect home specific variations. Any and all such variations, for example additional windows, are shown on home specific drawings for this development. The positions of the appliances and furniture are indicative and not to scale. Please speak to our sales executive for details. Computer generated images are a generic indication of a finished house type but are not specific to this development. External finishes, materials and appearance will vary, please refer to home specific drawing and information in sales office.





HOPKINS
HOMES

The Milton.

THREE BEDROOM HOUSE

Homes 131(h), 132, 160 & 161(h)

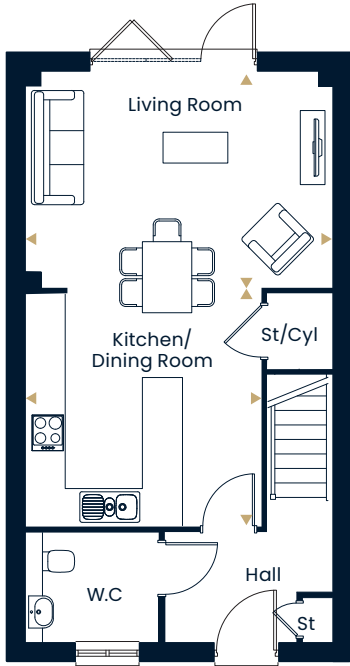


The Milton.

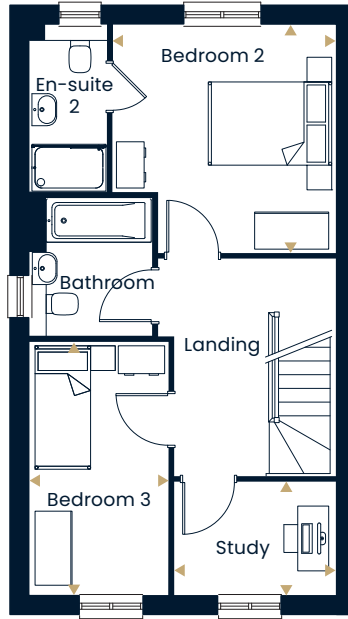
THREE BEDROOM HOUSE

Homes 131(h), 132, 160 & 161(h)

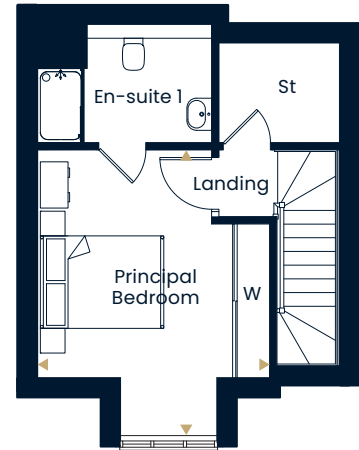
Ground Floor



First Floor



Second Floor



Dining/ Living	4.86 x 3.45	15' 11" x 11' 4"
Kitchen	3.76 x 3.73	12' 4" x 12' 3"

Bedroom 2	3.51 x 3.65	11' 6" x 12' 0"
Bedroom 3	2.20 x 4.08	7' 3" x 13' 5"
Study	2.54 x 1.81	8' 4" x 5' 11"

Principal Bedroom	3.76 x 4.63	12' 4" x 15' 2"
----------------------	-------------	-----------------

117m² | 1269ft²

• Cyl - Water Cylinder • St Storage • W Wardrobe • W.C Toilet/cloakroom

(h) indicates handed plot. This floorplan is indicative of this house type only and does not reflect home specific variations. Any and all such variations, for example additional windows, are shown on home specific drawings for this development. The positions of the appliances and furniture are indicative and not to scale. Please speak to our sales executive for details. Computer generated images are a generic indication of a finished house type but are not specific to this development. External finishes, materials and appearance will vary, please refer to home specific drawing and information in sales office.





HOPKINS
HOMES

The Ixworth.

FOUR BEDROOM HOUSE

Homes 3, 20(h), 21, 125, 142(h), 193(h) & 195

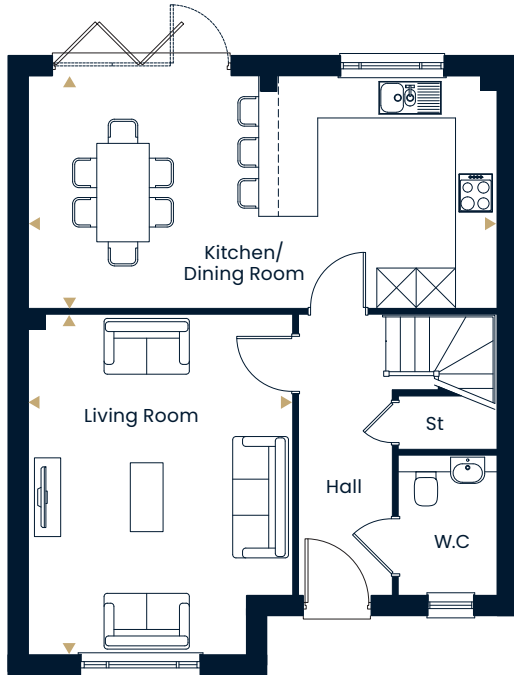


The Ixworth.

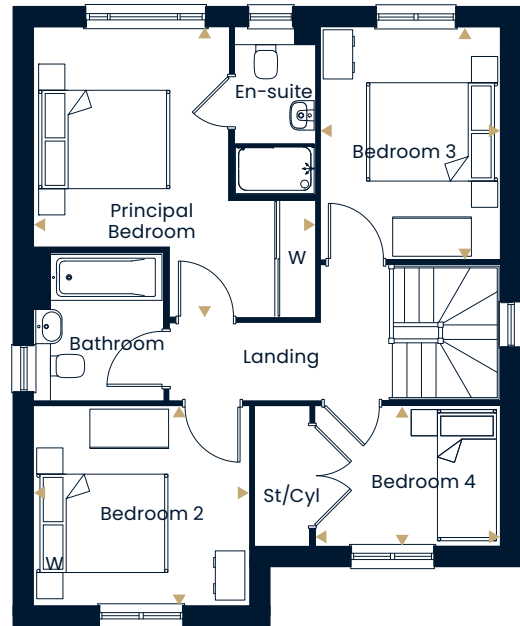
FOUR BEDROOM HOUSE

Homes 3, 20(h), 21, 125, 142(h), 193(h) & 195

Ground Floor



First Floor



Kitchen / Dining	7.07 x 3.48	23' 2" x 11' 5"
Living Room	3.97 x 5.13	13' 0" x 6' 10"

Principal Bedroom	4.25 x 4.37	13' 11" x 14' 4"
Bedroom 2	3.24 x 2.99	10' 8" x 9' 10"
Bedroom 3	2.70 x 3.49	8' 10" x 11' 5"
Bedroom 4	2.79 x 2.09	9' 2" x 6' 10"

116m² | 1257ft²

• Cyl - Water Cylinder • St Storage • W Wardrobe • W.C Toilet/cloakroom

(h) indicates handed plot. This floorplan is indicative of this house type only and does not reflect home specific variations. Any and all such variations, for example additional windows, are shown on home specific drawings for this development. The positions of the appliances and furniture are indicative and not to scale. Please speak to our sales executive for details. Computer generated images are a generic indication of a finished house type but are not specific to this development. External finishes, materials and appearance will vary, please refer to home specific drawing and information in sales office.





HOPKINS
HOMES

The Brampton.

FOUR BEDROOM HOUSE

Homes 128 & 178(h)

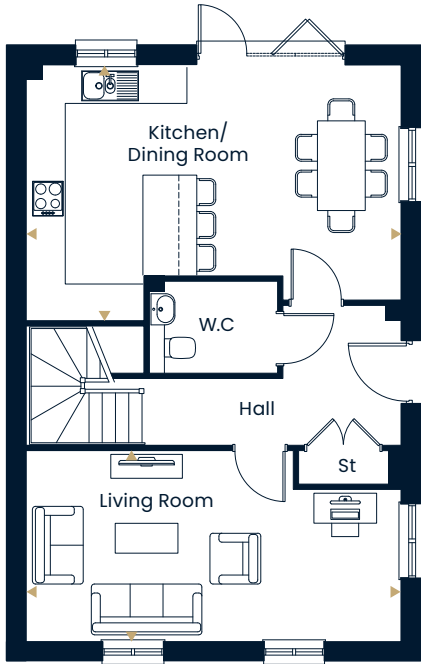


The Brampton.

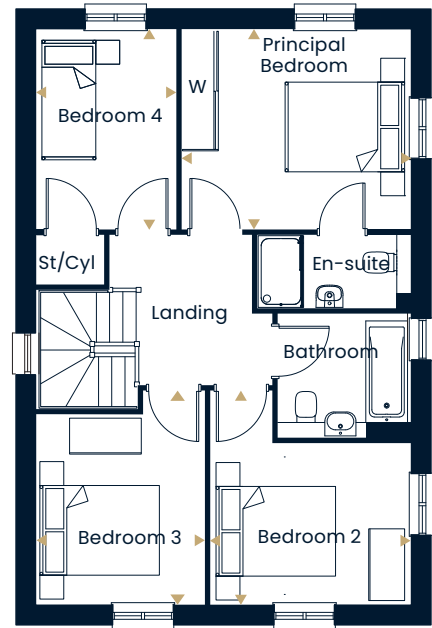
FOUR BEDROOM HOUSE

Homes 128 & 178(h)

Ground Floor



First Floor



Kitchen/Dining	6.17 x 4.20	20' 3" x 13' 10"
Living Room	6.17 x 3.10	20' 3" x 10' 2"

Principal Bedroom	3.77 x 3.30	12' 4" x 10' 10"
Bedroom 2	3.29 x 3.52	10' 9" x 11' 7"
Bedroom 3	2.76 x 3.52	9' 1" x 11' 7"
Bedroom 4	2.28 x 3.30	7' 6" x 10' 10"

117m² | 1267ft²

• Cyl - Water Cylinder • St Storage • W Wardrobe • W.C Toilet/cloakroom

(h) indicates handed plot. This floorplan is indicative of this house type only and does not reflect home specific variations. Any and all such variations, for example additional windows, are shown on home specific drawings for this development. The positions of the appliances and furniture are indicative and not to scale. Please speak to our sales executive for details. Computer generated images are a generic indication of a finished house type but are not specific to this development. External finishes, materials and appearance will vary, please refer to home specific drawing and information in sales office.





HOPKINS
HOMES

The Newton.

FOUR BEDROOM HOUSE

Homes 1(h), 19(h), 24(h), 120(h), 144(h), 149, 155(h) & 192

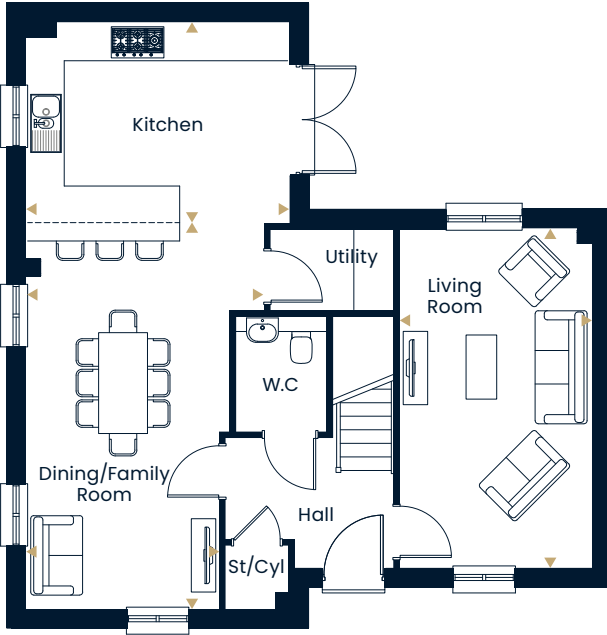


The Newton.

FOUR BEDROOM HOUSE

Homes 1(h), 19(h), 24(h), 120(h), 144(h), 149, 155(h) & 192

Ground Floor



First Floor



Kitchen	4.26 x 3.26	14' 0" x 10' 8"
Dining Room	3.87 x 3.41	12' 8" x 11' 2"
Family Area	3.13 x 2.88	10' 3" x 9' 5"
Living Room	3.10 x 5.49	10' 2" x 18' 0"

Principal Bedroom	4.26 x 3.26	14' 0" x 10' 8"
Bedroom 2	4.89 x 2.75	16' 0" x 9' 0"
Bedroom 3	3.40 x 3.97	11' 2" x 13' 0"
Bedroom 4	3.02 x 2.49	10' 6" x 8' 2"

135m² | 1460ft²

• Cyl - Water Cylinder • St Storage • W Wardrobe • W.C Toilet/cloakroom

(h) indicates handed plot. This floorplan is indicative of this house type only and does not reflect home specific variations. Any and all such variations, for example additional windows, are shown on home specific drawings for this development. The positions of the appliances and furniture are indicative and not to scale. Please speak to our sales executive for details. Computer generated images are a generic indication of a finished house type but are not specific to this development. External finishes, materials and appearance will vary, please refer to home specific drawing and information in sales office.





HOPKINS
HOMES

The Brantham.

FOUR BEDROOM HOUSE

Homes 2(h), 4(h), 22(h), 23, 123, 124, 194(h) & 196

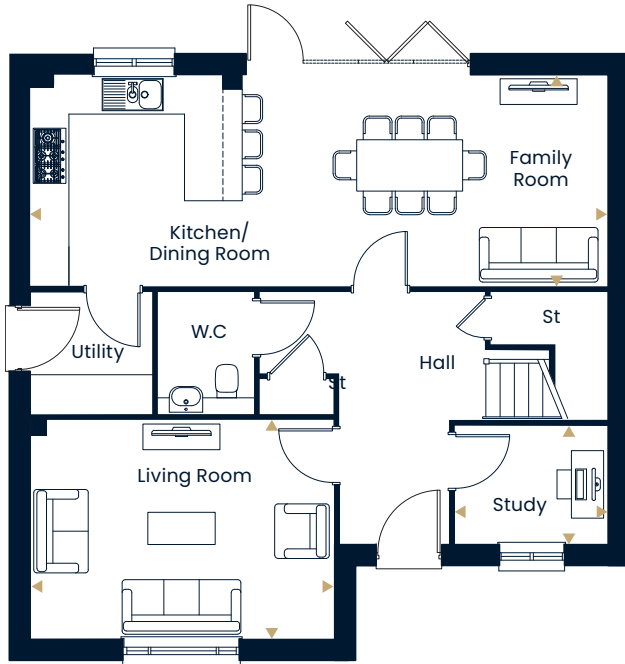


The Brantham.

FOUR BEDROOM HOUSE

Homes 2(h), 4(h), 22(h), 23, 123, 124, 194(h) & 196

Ground Floor



First Floor



Kitchen / Dining		
/ Family	8.98 x 3.26	29' 6" x 10' 8"
Living Room	4.72 x 3.38	15' 6" x 11' 1"
Study	2.35 x 1.82	7' 9" x 6' 0"

Principal Bedroom	4.71 x 4.03	15' 5" x 13' 3"
Bedroom 2	3.23 x 4.22	10' 7" x 13' 10"
Bedroom 3	4.16 x 3.27	13' 8" x 10' 9"
Bedroom 4	4.16 x 2.56	13' 8" x 8' 5"

144m² | 1558ft²

• Cyl - Water Cylinder • St Storage • W Wardrobe • W.C Toilet/cloakroom

(h) indicates handed plot. This floorplan is indicative of this house type only and does not reflect home specific variations. Any and all such variations, for example additional windows, are shown on home specific drawings for this development. The positions of the appliances and furniture are indicative and not to scale. Please speak to our sales executive for details. Computer generated images are a generic indication of a finished house type but are not specific to this development. External finishes, materials and appearance will vary, please refer to home specific drawing and information in sales office.





HOPKINS
HOMES

The Thaxted.

FOUR BEDROOM HOUSE

Homes 5, 10(h) & 197(h)

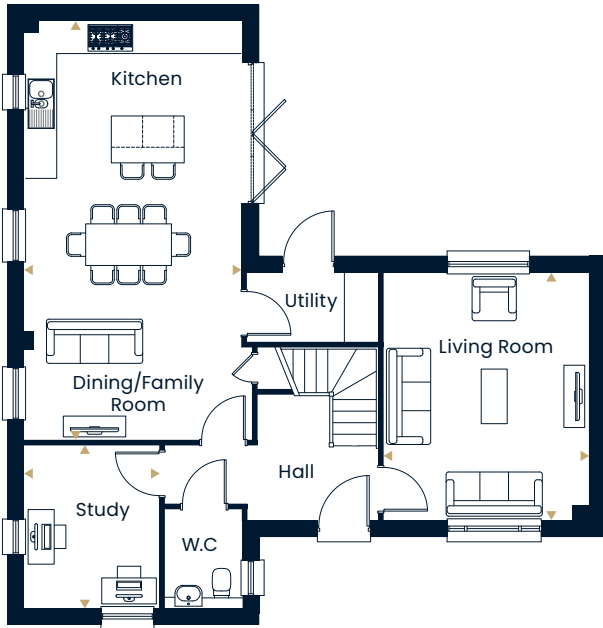


The Thaxted.

FOUR BEDROOM HOUSE

Homes 5, 10(h) & 197(h)

Ground Floor



First Floor



Kitchen / Dining	4.38 x 8.02	14' 4" x 26' 4"
Living Room	3.90 x 4.71	12' 10" x 15' 5"
Study	2.57 x 3.09	8' 5" x 10' 2"

Principal Bedroom	4.71 x 4.71	15' 6" x 15' 5"
Bedroom 2	4.14 x 2.85	13' 7" x 9' 4"
Bedroom 3	4.14 x 3.69	13' 7" x 12' 1"
Bedroom 4	2.91 x 3.02	9' 9" x 9' 11"

155m² | 1676ft²

• Cyl - Water Cylinder • St Storage • W Wardrobe • W.C Toilet/cloakroom

(h) indicates handed plot. This floorplan is indicative of this house type only and does not reflect home specific variations. Any and all such variations, for example additional windows, are shown on home specific drawings for this development. The positions of the appliances and furniture are indicative and not to scale. Please speak to our sales executive for details. Computer generated images are a generic indication of a finished house type but are not specific to this development. External finishes, materials and appearance will vary, please refer to home specific drawing and information in sales office.





HOPKINS
HOMES

hopkinshomes.co.uk/BournemouthPark

Bournemouth Park, Halstead, Essex, CO9 1GE
01787 323 739